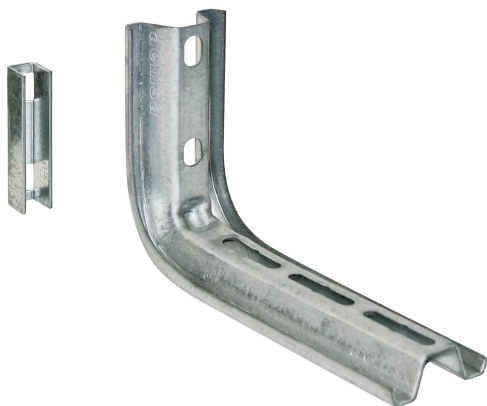


# Horizontal bracket Omega 150 PG

Reference 4550315



Activity	Cable support systems
Product family	Support system
Brand	Stago
Range	Performa

## Status product

Product status	Commercialized
----------------	----------------

## Commercial and Web

Short description	Horizontal bracket Omega 150 PG
Medium description	Performa - Omega horizontal bracket 150 - 131 x 200 x 50 mm - steel pre-galvanized
Width	150 mm
Material	Steel
Material type or surface treatment	Electro-galvanized
Environmental corrosion class	C1

## Base

Activity	Cable support systems
Product family	Support system
Brand	Stago
Range	Performa
GTIN	8428031083779

## ETIM (EC000022-Bracket for cable support system)

Length (EF001438)	* mm
Width (EF000008)	* mm

Height (EF000040)	* mm
Suitable for cable management system width (EF008339)	* mm
Model (EF000010)	*
Angle (EF005434)	* °
Load bearing capacity (EF002918)	* kN
Suitable for circuit integrity (EF007806)	*
Material (EF002169)	Steel
Material quality (EF001257)	*
Surface protection (EF000139)	Continuously galvanized
Colour (EF000007)	*
RAL (EF000116)	*

---

## Logistic

Weight pack 1	.386 kg
Length pack 1	210 mm
Width pack 1	50 mm
Height pack 1	131 mm
Customs code	7907000000
Net weight	.39 kg
Country of origin	NL

---

## Certification

ETIM class	EC000022
------------	----------

---

## Product downloads

---

For the latest information check <http://wibe-group.com/cable-support-systems/mesh-trays/cantilevers-and-central-suspension-brackets/horizontal-bracket-omega-150-pg>