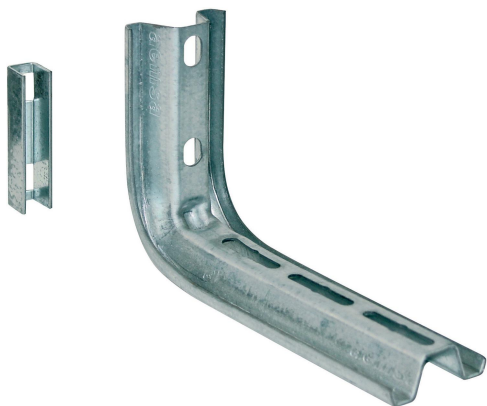


Horizontal bracket Omega 200 PG

Reference 4550320



Activity	Cable support systems
Product family	Support system
Brand	Stago
Range	Performa

Status product

Product status	Commercialized
----------------	----------------

Commercial and Web

Short description	Horizontal bracket Omega 200 PG
Medium description	Performa - Omega horizontal bracket 200 - 131 x 250 x 50 - steel pre-galvanized
Width	200 mm
Material	Steel
Material type or surface treatment	Pre-galvanized
Environmental corrosion class	C2

Base

Activity	Cable support systems
Product family	Support system
Brand	Stago
Range	Performa
GTIN	8428031083786

ETIM (EC000022-Bracket for cable support system)

Length (EF001438)	* mm
Width (EF000008)	250 mm

Height (EF000040)	131 mm
Suitable for cable management system width (EF008339)	200-200 mm
Model (EF000010)	Wall bracket
Angle (EF005434)	90-90 ° °
Load bearing capacity (EF002918)	* kN
Suitable for circuit integrity (EF007806)	No
Material (EF002169)	Steel
Material quality (EF001257)	*
Surface protection (EF000139)	Continuously galvanized
Colour (EF000007)	*
RAL (EF000116)	*

Logistic

Pack 1 type	Each
Quantity pack 1	1
Weight pack 1	.45 kg
Length pack 1	260 mm
Width pack 1	50 mm
Height pack 1	131 mm
GTIN pack 1	8428031083786
Customs code	7907000000
Net weight	.45 kg
Country of origin	NL

Certification

ETIM class	EC000022
------------	----------

Product downloads

For the latest information check <http://wibe-group.com/cable-support-systems/mesh-trays/cantilevers-and-central-suspension-brackets/horizontal-bracket-omega-200-pg>