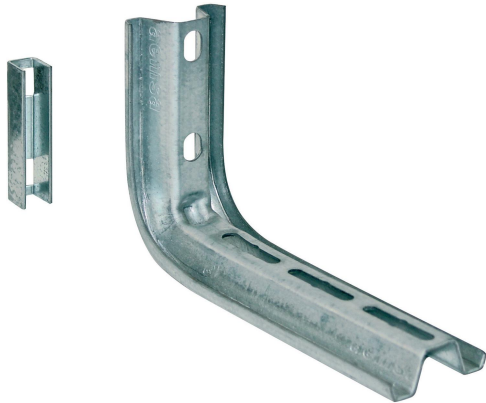


Horizontal bracket Omega 300 PG

Reference 4550330



Activity	Cable support systems
Product family	Support system
Brand	Stago
Range	Performa

Base

Activity	Cable support systems
Product family	Support system
Brand	Stago
Range	Performa
GTIN	8428031083793

Commercial and Web

Short description	Horizontal bracket Omega 300 PG
Medium description	Performa - Omega horizontal bracket 300 - 131 x 300 x 50 mm - steel pre-galvanized
Width	300 mm
Material	Steel
Material type or surface treatment	Pre-galvanized
Corrosion class	C2

ETIM (EC000022-Bracket for cable support system)

Length (EF001438)	50 mm
Width (EF000008)	300 mm
Height (EF000040)	131 mm
Suitable for cable management system width (EF008339)	300 - 300 mm
Model (EF000010)	Wall bracket

Angle (EF005434)	90 - 90 °
Suitable for circuit integrity (EF007806)	No
Material (EF002169)	Steel
Material quality (EF001257)	Other
Surface protection (EF000139)	Continuously galvanized
Colour (EF000007)	*
RAL (EF000116)	*
Max. safe working load according to IEC 61537 (EF016305)	780 N

Logistic

Pack 1 type	Each
Quantity pack 1	1
Weight pack 1	0.575 kg
Length pack 1	360 mm
Width pack 1	50 mm
Height pack 1	131 mm
GTIN pack 1	8428031083793
Customs code	79070000
Net weight	0.58 kg
Country of origin	NL

Certification

ETIM class	EC000022
------------	----------

Status product

Product status	Commercialized
----------------	----------------

Environmental

GWP Total A1-A3	1.42 kgCO2e
-----------------	-------------

For the latest information check <http://wibe-group.com/cable-support-systems/mesh-trays/cantilevers-and-central-suspension-brackets/horizontal-bracket-omega-300-pg>