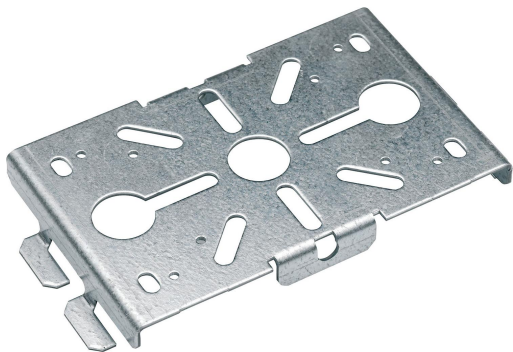


# Support for box + bracket double PG

Reference 4571130



Activity	Cable support systems
Product family	Support system
Brand	Stago
Range	Performa

## Commercial and Web

Short description	Support for box + bracket double PG
Medium description	Performa - support for box + bracket, double - 100 x 182 x 20 mm - steel pre-galvanized
Material	Steel
Material type or surface treatment	Electro-galvanized
Corrosion class	C1

## Base

Activity	Cable support systems
Product family	Support system
Brand	Stago
Range	Performa
GTIN	8428031065980

## ETIM (EC001004-Mounting plate for cable support system)

Model (EF000010)	Horizontal
Plate height (EF005176)	100 mm
Plate width (EF005175)	182 mm
Type of fastening (EF002442)	Screw mounting
Material (EF002169)	Steel
Stainless steel, pickled (EF006388)	No
Material quality (EF001257)	Other
Surface protection (EF000139)	Continuously galvanized

---

Logistic

Weight pack 1	.265
Length pack 1	183 mm
Width pack 1	100
Height pack 1	21
Customs code	7326909890
Country of origin	NL

---

Certification

ETIM class	EC001004
------------	----------

---

Status product

Product status	Commercialized
----------------	----------------

---

Product downloads

---

For the latest information check <http://wibe-group.com/cable-support-systems/mesh-trays/cantilevers-and-central-suspension-brackets/support-for-box-and-bracket-double-pg>