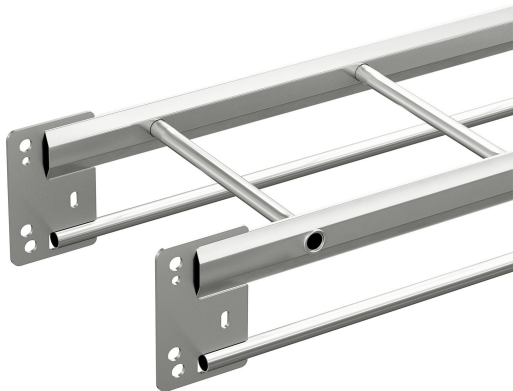


Cable ladder KHZV-300 6m HDG

Reference 712017



Activity	Cable support systems
Product family	Cable ladders
Brand	Wibe
Range	KHZV

Status product

Product status	Commercialized
----------------	----------------

Commercial and Web

Short description	Cable ladder KHZV-300 6m HDG
Medium description	Wibe - reinforced cable ladder - KHZV-300 - closed side profiles and round rungs - 6 m - steel hot-dip galvanized
Length	6000 mm
Width	300 mm
Height	150 mm
Material	Steel
Material type or surface treatment	Hot-dip galvanized
Environmental corrosion class	C4

Base

Activity	Cable support systems
Product family	Cable ladders
Brand	Wibe
Range	KHZV
GTIN	7321677120178

ETIM (EC000854-Cable ladder/wide span cable ladder)

Type of side joist (EF007666)	Tube shape (closed)
Side wall perforation (EF001122)	Yes
Type of rung (EF001060)	Tube shape (closed)
Fixation rung (EF008307)	Fully revited
Height (EF000040)	134 mm
Width (EF000008)	300 mm
Length (EF001438)	6000 mm
Useful cross section (EF005140)	24000 mm ²
Rung centre spacing (EF008185)	250 mm
Wide span model (EF006397)	Yes
Suitable for circuit integrity (EF007806)	No
Material (EF002169)	Steel
Material quality (EF001257)	Other
Surface protection (EF000139)	Hot-dip galvanized
Colour (EF000007)	*
RAL (EF000116)	*
Max. safe working load according to IEC 61537 (EF016305)	* N/m
Span between supports according to IEC 61537 (EF015363)	* mm
Load test type according to IEC 61537 (EF015362)	Type II
Weight (EF000167)	4.6 kg/m

Logistic

Pack 1 type	Each
Quantity pack 1	1
Weight pack 1	27.6 kg
Length pack 1	6100 mm
Width pack 1	297 mm
Height pack 1	150 mm
GTIN pack 1	7321677120178
Pack 4 type	Pallet
Quantity pack 4	10
Weight pack 4	276 kg
Length pack 4	6100 mm
Width pack 4	310 mm
Height pack 4	790 mm
Customs code	73089059
Net weight	27.6 kg
Country of origin	SE

Certification

ETIM class	EC000854
------------	----------

Environmental

GWP Total A1-A3	77.004 kgCO2e
-----------------	---------------

Product downloads
