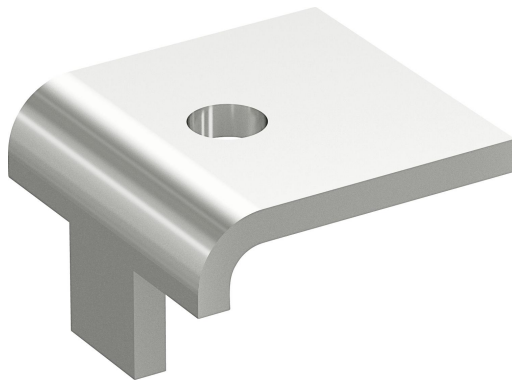


Beam clamp 5BK-10 HDG

Reference 715675



Activity
Product family
Brand

Cable support systems
Support system
Wibe

Status product

Product status

Commercialized

Commercial and Web

Short description

Beam clamp 5BK-10 HDG

Medium description

Wibe - beam clamp 5BK-10 - steel hot-dip galvanized

Material

Steel

Material type or surface treatment

Hot-dip galvanized

Environmental corrosion class

C4

Base

Activity

Cable support systems

Product family

Support system

Brand

Wibe

GTIN

7321677156757

ETIM (EC000464-Fixing clamp)

Type of fastening (EF002442)

Screwing

Connection type construction part (EF004374)

Clamp

Thread size (metric) (EF003563)

*

Suitable for flange thickness

5 - 13 mm

(EF006596)	
Tube/cable diameter (EF005214)	- mm
Hinging (EF001076)	No
Hinge adjustable (EF002645)	No
Material (EF002169)	Steel
Material quality (EF001257)	*
Surface protection (EF000139)	Hot-dip galvanized
Breaking load (EF004571)	7500 N

Logistic

Quantity pack 1	1
Weight pack 1	0.122 kg
Length pack 1	50 mm
Width pack 1	50 mm
Height pack 1	30 mm
Customs code	73089059
Net weight	0.12 kg
Country of origin	SE

Certification

ETIM class	EC000464
------------	----------

Environmental

GWP Total A1-A3	0.3404 kgCO2e
-----------------	---------------

Product downloads
