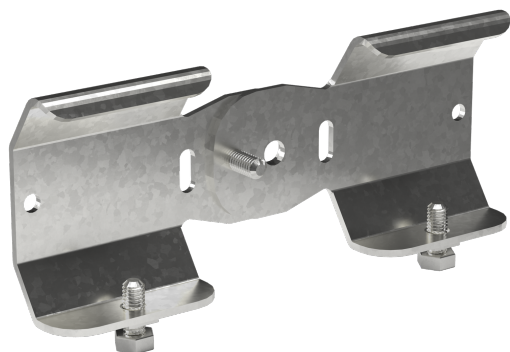


Coupling 22 HDG

Reference 718409



Activity	Cable support systems
Product family	Cable ladders
Brand	Wibe
Range	Accessories

Base

Activity	Cable support systems
Product family	Cable ladders
Brand	Wibe
Range	Accessories
GTIN	7321677184095

Commercial and Web

Short description	Coupling 22 HDG
Medium description	Wibe - coupling 22 - steel hot-dip galvanized
Material	Steel
Material type or surface treatment	Hot-dip galvanized
Corrosion class	C4

ETIM (EC002413-Connector for cable support system)

Model (EF000010)	Length- and angle joint
Hinged joint horizontal (EF006392)	Yes
Hinged joint vertical (EF006393)	Yes
Type of connection (EF000064)	Screw connector
Suitable for wire mesh tray (EF005163)	No
Suitable for cable ladder (EF005165)	Yes
Suitable for cable tray (EF005166)	No
Suitable for cable management system width (EF008339)	150 - 1000 mm

Suitable for cable management system height (EF006391)	60 mm
Suitable for mesh cable tray filament (EF005164)	- mm
Length (EF001438)	150 mm
Suitable for circuit integrity (EF007806)	No
Material (EF002169)	Steel
Stainless steel, pickled (EF006388)	No
Material quality (EF001257)	*
Surface protection (EF000139)	Hot-dip galvanized
Colour (EF000007)	*
RAL (EF000116)	*

Logistic

Pack 1 type	Each
Quantity pack 1	1
Weight pack 1	0.21 kg
Length pack 1	150 mm
Width pack 1	80 mm
Height pack 1	24 mm
Customs code	73089059
Net weight	0.21 kg
Country of origin	SE

Certification

ETIM class	EC002413
------------	----------

Status product

Product status	Commercialized
----------------	----------------

Environmental

GWP Total A1-A3	0.5859 kgCO2e
-----------------	---------------

For the latest information check <http://wibe-group.com/cable-support-systems/cable-ladders/accessories/coupling-22-hdg>