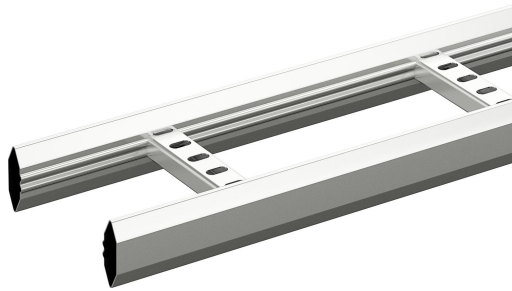


Cable ladder KHZP-150 6m HDG

Reference 718562



Activity
Product family
Brand
Range

Cable support systems
Cable ladders
Wibe
KHZP

Status product

Product status

Commercialized

Commercial and Web

Short description

Cable ladder KHZP-150 6m HDG

Medium description

Wibe - cable ladder - KHZP-150 - closed side profiles and perforated rungs - 6 m - steel hot-dip galvanized

Length

6000 mm

Width

150 mm

Height

55 mm

Material

Steel

Material type or surface treatment

Hot-dip galvanized

Environmental corrosion class

C4

Base

Activity

Cable support systems

Product family

Cable ladders

Brand

Wibe

Range

KHZP

GTIN

7321677185627

ETIM (EC000854-Cable ladder/wide span cable ladder)

Type of side joist (EF007666)

Tube shape (closed)

Side wall perforation (EF001122)

No

Type of rung (EF001060)	Perforated profile
Fixation rung (EF008307)	Welded
Height (EF000040)	55 mm
Width (EF000008)	150 mm
Length (EF001438)	6000 mm
Useful cross section (EF005140)	12000 mm ²
Rung centre spacing (EF008185)	250 mm
Wide span model (EF006397)	No
Suitable for circuit integrity (EF007806)	Yes
Material (EF002169)	Steel
Material quality (EF001257)	Other
Surface protection (EF000139)	Hot-dip galvanized
Colour (EF000007)	*
RAL (EF000116)	*
Max. safe working load according to IEC 61537 (EF016305)	* N/m
Span between supports according to IEC 61537 (EF015363)	* mm
Load test type according to IEC 61537 (EF015362)	Type II
Weight (EF000167)	2.7 kg/m

Logistic

Pack 1 type	Each
Quantity pack 1	1
Weight pack 1	16.2 kg
Length pack 1	6000 mm
Width pack 1	147 mm
Height pack 1	55 mm
GTIN pack 1	7321677185627
Pack 4 type	Pallet
Quantity pack 4	30
Weight pack 4	486 kg
Length pack 4	6000 mm
Width pack 4	340 mm
Height pack 4	580 mm
Customs code	73089059
Net weight	16.2 kg
Country of origin	SE

Certification

ETIM class	EC000854
------------	----------

Environmental

GWP Total A1-A3	45.198 kgCO ₂ e
-----------------	----------------------------

