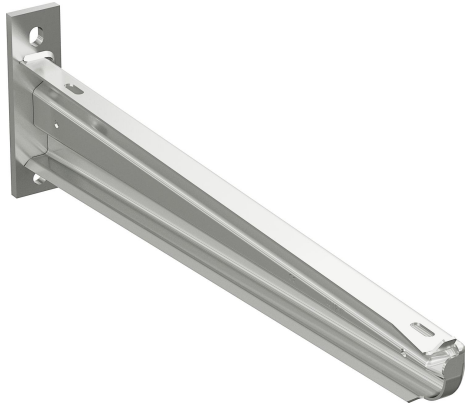


Cantilever arm 50F-600 HDG

Reference 718628



Activity	Cable support systems
Product family	Support system
Brand	Wibe
Range	Accessories

Base

Activity	Cable support systems
Product family	Support system
Brand	Wibe
Range	Accessories
GTIN	7321677186280

Commercial and Web

Short description	Cantilever arm 50F-600 HDG
Medium description	Wibe - cantilever arm 50F-600 - steel hot-dip galvanized
Width	600 mm
Material	Steel
Material type or surface treatment	Hot-dip galvanized
Corrosion class	C4

ETIM (EC000022-Bracket for cable support system)

Length (EF001438)	647 mm
Width (EF000008)	50 mm
Height (EF000040)	180 mm
Suitable for cable management system width (EF008339)	600 - 600 mm
Model (EF000010)	Wall- and profile console

Angle (EF005434)	90 - 90 °
Suitable for circuit integrity (EF007806)	No
Material (EF002169)	Steel
Material quality (EF001257)	Other
Surface protection (EF000139)	Hot-dip galvanized
Colour (EF000007)	*
RAL (EF000116)	*
Max. safe working load according to IEC 61537 (EF016305)	4700 N

Logistic

Pack 1 type	Each
Quantity pack 1	1
Weight pack 1	2.5 kg
Length pack 1	637 mm
Width pack 1	50 mm
Height pack 1	180 mm
Pack 4 type	Pallet
Quantity pack 4	50
Weight pack 4	160 kg
Length pack 4	1200 mm
Width pack 4	800 mm
Height pack 4	340 mm
Customs code	73089059
Net weight	2.5 kg
Country of origin	SE

Certification

ETIM class	EC000022
------------	----------

Status product

Product status	Commercialized
----------------	----------------

Environmental

GWP Total A1-A3	6.975 kgCO2e
-----------------	--------------

For the latest information check <http://wibe-group.com/cable-support-systems/cable-ladders/cantilevers-and-central-suspension-brackets/cantilever-arm-50f-600-hdg>