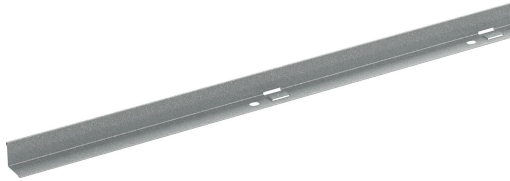


Dividing strip 39/24 1.75m PG

Reference 718835



Activity
Product family
Brand

Cable support systems
Common accessories
Wibe

Status product

Product status

Commercialized

Commercial and Web

Short description

Dividing strip 39/24 1.75m PG

Medium description

Wibe - dividing strip 39/24 - 1.75 m - steel pre-galvanized

Material

Steel

Material type or surface treatment

Pre-galvanized

Environmental corrosion class

C2

Base

Activity

Cable support systems

Product family

Common accessories

Brand

Wibe

GTIN

7321677188352

ETIM (EC001000-Separation plate for cable support system)

Partition height (EF005362)

24 mm

Length (EF001438)

1750 mm

Model (EF000010)

L-profile

Mounting perforation (EF008150)

Yes

Type of fastening (EF002442)

Screwable

Suitable for wire mesh tray (EF005163)

No

Suitable for cable ladder (EF005165)

Yes

Suitable for cable tray (EF005166)

Yes

Suitable for circuit integrity

No

(EF007806)	
Material (EF002169)	Steel
Stainless steel, pickled (EF006388)	No
Material quality (EF001257)	Other
Surface protection (EF000139)	Continuously galvanized
RAL (EF000116)	*
Colour (EF000007)	*

Logistic

Pack 1 type	Each
Quantity pack 1	1
Weight pack 1	0.46 kg
Length pack 1	1750 mm
Width pack 1	24 mm
Height pack 1	24 mm
Customs code	73089059
Net weight	0.46 kg
Country of origin	SE

Certification

ETIM class	EC001000
------------	----------

Environmental

GWP Total A1-A3	1.306 kgCO2e
-----------------	--------------

Product downloads

For the latest information check <http://wibe-group.com/cable-support-systems/cable-ladders/dividers/divid-strip-39-24-1-75m-pre-galv>