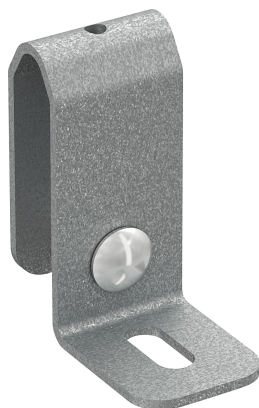


# Wall bracket 11/25 PG

Reference 721105



Activity  
Product family  
Brand

Cable support systems  
Cable ladders  
Wibe

## Status product

Product status

Commercialized

## Commercial and Web

Short description

Wall bracket 11/25 PG

Medium description

Wibe - wall bracket 11/25 - steel pre-galvanized

Material

Steel

Material type or surface treatment

Pre-galvanized

Environmental corrosion class

C2

## Base

Activity

Cable support systems

Product family

Cable ladders

Brand

Wibe

GTIN

7321677211050

## ETIM (EC001003-Wall- and ceiling bracket for cable support system)

Suitable for cable management  
system width (EF008339)

- mm

Suitable for cable management  
system height (EF006391)

55 mm

Model (EF000010)

Other

Suitable for wire mesh tray (EF005163)	No
Suitable for cable ladder (EF005165)	Yes
Suitable for cable tray (EF005166)	No
Tray mounting (EF005212)	Screwable
Load bearing capacity (EF002918)	2500 kN
Suitable for circuit integrity (EF007806)	No
Material (EF002169)	Steel
Material quality (EF001257)	*
Surface protection (EF000139)	Continuously galvanized
Colour (EF000007)	*
RAL (EF000116)	*

## Logistic

Pack 1 type	Each
Quantity pack 1	1
Weight pack 1	0.24 kg
Length pack 1	82 mm
Width pack 1	71 mm
Height pack 1	40 mm
Pack 2 type	Bag
Quantity pack 2	10
Weight pack 2	2 kg
Length pack 2	220 mm
Width pack 2	150 mm
Height pack 2	90 mm
Pack 4 type	Pallet
Quantity pack 4	500
Weight pack 4	34 kg
Length pack 4	1200 mm
Width pack 4	800 mm
Height pack 4	340 mm
GTIN pack 4	77321677211059
Customs code	73089059
Net weight	0.24 kg
Country of origin	SE

## Certification

ETIM class	EC001003
------------	----------

## Environmental

GWP Total A1-A3	0.682 kgCO2e
-----------------	--------------

## Product downloads

For the latest information check <http://wibe-group.com/cable-support-systems/cable-ladders/accessories/wall-bracket-11-25-pre-galv>