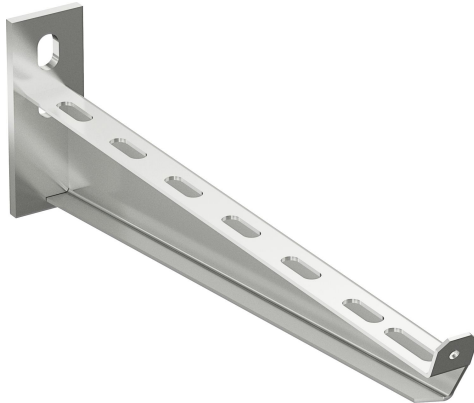


# Cantilever arm 50-200 HDG

Reference 723434



Activity	Cable support systems
Product family	Support system
Brand	Wibe
Range	Accessories

## Base

Activity	Cable support systems
Product family	Support system
Brand	Wibe
Range	Accessories
GTIN	7321677234349

## Commercial and Web

Short description	Cantilever arm 50-200 HDG
Medium description	Wibe - cantilever arm 50-200 - steel hot-dip galvanized
Width	200 mm
Material	Steel
Material type or surface treatment	Hot-dip galvanized
Corrosion class	C4

## ETIM (EC000022-Bracket for cable support system)

Length (EF001438)	250 mm
Width (EF000008)	40 mm
Height (EF000040)	85 mm
Suitable for cable management system width (EF008339)	100 - 200 mm
Model (EF000010)	Wall- and profile console

Angle (EF005434)	90 - 90 °
Suitable for circuit integrity (EF007806)	No
Material (EF002169)	Steel
Material quality (EF001257)	Other
Surface protection (EF000139)	Hot-dip galvanized
Colour (EF000007)	*
RAL (EF000116)	*
Max. safe working load according to IEC 61537 (EF016305)	1500 N

---

## Logistic

Pack 1 type	Each
Quantity pack 1	1
Weight pack 1	0.34 kg
Length pack 1	258 mm
Width pack 1	85 mm
Height pack 1	40 mm
Pack 4 type	Pallet
Quantity pack 4	300
Weight pack 4	132 kg
Length pack 4	1200 mm
Width pack 4	800 mm
Height pack 4	340 mm
Customs code	73089059
Net weight	0.34 kg
Country of origin	SE

---

## Certification

ETIM class	EC000022
------------	----------

---

## Status product

Product status	Commercialized
----------------	----------------

---

## Environmental

GWP Total A1-A3	0.9486 kgCO2e
-----------------	---------------

---

For the latest information check <http://wibe-group.com/cable-support-systems/cable-trays/cantilevers-central-suspension-brackets/cantilever-arm-50-200-hdg>