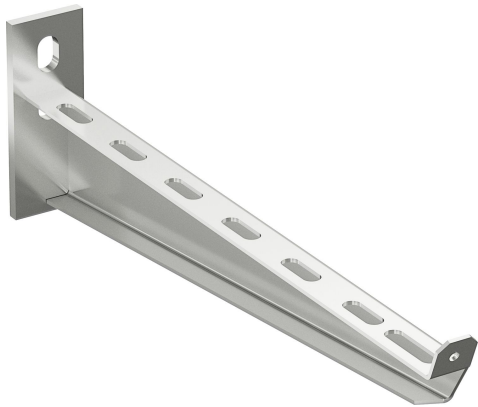


Cantilever arm 50-300 HDG

Reference 723436



Activity
Product family
Brand

Cable support systems
Support system
Wibe

Status product

Product status	Commercialized
----------------	----------------

Commercial and Web

Short description	Cantilever arm 50-300 HDG
Medium description	Wibe - cantilever arm 50-300 - steel hot-dip galvanized
Width	300 mm
Material	Steel
Material type or surface treatment	Hot-dip galvanized
Environmental corrosion class	C4

Base

Activity	Cable support systems
Product family	Support system
Brand	Wibe
GTIN	7321677234363

ETIM (EC000022-Bracket for cable support system)

Length (EF001438)	350 mm
Width (EF000008)	40 mm
Height (EF000040)	105 mm

Suitable for cable management system width (EF008339)	100 - 300 mm
Model (EF000010)	Wall- and profile console
Angle (EF005434)	90 - 90 °
Load bearing capacity (EF002918)	4 kN
Suitable for circuit integrity (EF007806)	No
Material (EF002169)	Steel
Material quality (EF001257)	Other
Surface protection (EF000139)	Hot-dip galvanized
Colour (EF000007)	*
RAL (EF000116)	*

Logistic

Pack 1 type	Each
Quantity pack 1	1
Weight pack 1	.6 kg
Length pack 1	365 mm
Width pack 1	105 mm
Height pack 1	40 mm
Pack 4 type	Pallet
Quantity pack 4	200
Weight pack 4	150 kg
Length pack 4	1200 mm
Width pack 4	800 mm
Height pack 4	340 mm
Customs code	73089059
Net weight	.6 kg
Country of origin	SE

Certification

ETIM class	EC000022
------------	----------

Environmental

GWP Total A1-A3	1.674 kgCO2e
-----------------	--------------

Product downloads

For the latest information check <http://wibe-group.com/cable-support-systems/cable-trays/cantilevers-central-suspension-brackets/cantilever-arm-50-300-hdg>