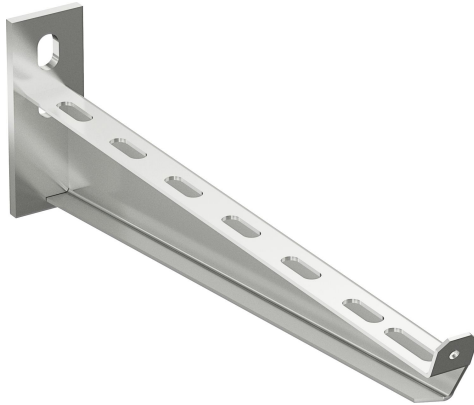


Cantilever arm 50-500 HDG

Reference 723438



Activity
Product family
Brand

Cable support systems
Support system
Wibe

Base

| | |
|----------------|-----------------------|
| Activity | Cable support systems |
| Product family | Support system |
| Brand | Wibe |
| GTIN | 7321677234387 |

Commercial and Web

| | |
|------------------------------------|---|
| Short description | Cantilever arm 50-500 HDG |
| Medium description | Wibe - cantilever arm 50-500 - steel hot-dip galvanized |
| Width | 500 mm |
| Material | Steel |
| Material type or surface treatment | Hot-dip galvanized |
| Corrosion class | C4 |

ETIM (EC000022-Bracket for cable support system)

| | |
|---|---------------------------|
| Length (EF001438) | 550 mm |
| Width (EF000008) | 50 mm |
| Height (EF000040) | 140 mm |
| Suitable for cable management system width (EF008339) | 100 - 500 mm |
| Model (EF000010) | Wall- and profile console |
| Angle (EF005434) | 90 - 90 ° |

| | |
|--|--------------------|
| Suitable for circuit integrity (EF007806) | No |
| Material (EF002169) | Steel |
| Material quality (EF001257) | Other |
| Surface protection (EF000139) | Hot-dip galvanized |
| Colour (EF000007) | * |
| RAL (EF000116) | * |
| Max. safe working load according to IEC 61537 (EF016305) | 4100 N |

Logistic

| | |
|-------------------|----------|
| Pack 1 type | Each |
| Quantity pack 1 | 1 |
| Weight pack 1 | 1.72 kg |
| Length pack 1 | 550 mm |
| Width pack 1 | 50 mm |
| Height pack 1 | 140 mm |
| Pack 4 type | Pallet |
| Quantity pack 4 | 80 |
| Weight pack 4 | 186 kg |
| Length pack 4 | 1200 mm |
| Width pack 4 | 800 mm |
| Height pack 4 | 340 mm |
| Customs code | 73089059 |
| Net weight | 1.72 kg |
| Country of origin | SE |

Certification

| | |
|------------|----------|
| ETIM class | EC000022 |
|------------|----------|

Status product

| | |
|----------------|----------------|
| Product status | Commercialized |
|----------------|----------------|

Environmental

| | |
|-----------------|---------------|
| GWP Total A1-A3 | 4.7988 kgCO2e |
|-----------------|---------------|

For the latest information check <http://wibe-group.com/cable-support-systems/cable-trays/cantilevers-central-suspension-brackets/cantilever-arm-50-500-hdg>