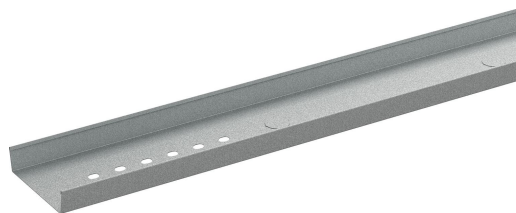


# Tele-conduit 36/50 2m PG

Reference 725065



Activity  
Product family  
Brand  
Range

Cable support systems  
Cable ladders  
Wibe  
Accessories

## Base

Activity	Cable support systems
Product family	Cable ladders
Brand	Wibe
Range	Accessories
GTIN	7321677250653

## Commercial and Web

Short description	Tele-conduit 36/50 2m PG
Medium description	Wibe - tele-conduit 36/50 - 2 m - steel pre-galvanized
Length	2000 mm
Width	50 mm
Height	24 mm
Material	Steel
Material type or surface treatment	Pre-galvanized
Corrosion class	C2

## ETIM (EC000047-Cable tray/wide span cable tray)

Height (EF000040)	24 mm
Width (EF000008)	50 mm
Material thickness (EF000386)	0.6 mm
Length (EF001438)	2000 mm
Useful cross section (EF005140)	1200 mm <sup>2</sup>
With cover (EF007965)	No
Side wall perforation (EF001122)	No
Mounting perforation in bottom (EF004545)	No

NATO (EF006059)	No
Model (EF000010)	Without connector
Wide span model (EF006397)	*
Suitable for circuit integrity (EF007806)	No
Material (EF002169)	Steel
Stainless steel, pickled (EF006388)	No
Material quality (EF001257)	*
Surface protection (EF000139)	Continuously galvanized
Colour (EF000007)	*
RAL (EF000116)	*
Weight (EF000167)	0.9 kg/m
Max. safe working load according to IEC 61537 (EF016305)	* N
Span between supports according to IEC 61537 (EF015363)	* mm
Load test type according to IEC 61537 (EF015362)	*

---

## Logistic

Quantity pack 1	1
Weight pack 1	0.94 kg
Length pack 1	2000 mm
Width pack 1	50 mm
Height pack 1	24 mm
Customs code	73089059
Net weight	0.94 kg
Country of origin	SE

---

## Certification

ETIM class	EC001000
------------	----------

---

## Status product

Product status	Commercialized
----------------	----------------

---

## Environmental

GWP Total A1-A3	2.67 kgCO2e
-----------------	-------------

---