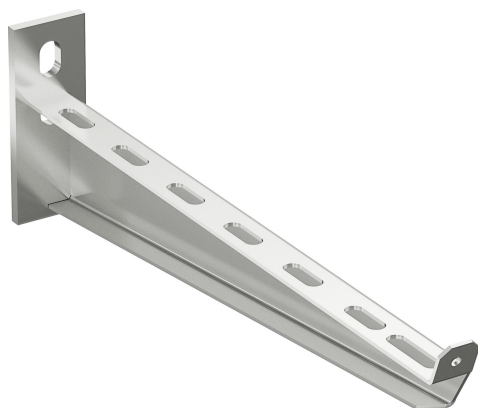


Cantilever arm 50-300 AISI316L

Reference 725622



Activity
Product family
Brand

Cable support systems
Support system
Wibe

Status product

Product status

Commercialized

Commercial and Web

Short description

Cantilever arm 50-300 AISI316L

Medium description

Wibe - cantilever arm 50-300 - stainless steel
AISI316L

Width

300 mm

Material

Stainless steel

Material type or surface treatment

AISI316L

Environmental corrosion class

CX

Base

Activity

Cable support systems

Product family

Support system

Brand

Wibe

GTIN

7321677256228

ETIM (EC000022-Bracket for cable support system)

Length (EF001438)

350 mm

Width (EF000008)

40 mm

Height (EF000040)

105 mm

Suitable for cable management system width (EF008339)	100 - 300 mm
Model (EF000010)	Wall- and profile console
Angle (EF005434)	90 - 90 °
Load bearing capacity (EF002918)	4 kN
Suitable for circuit integrity (EF007806)	No
Material (EF002169)	Stainless steel
Material quality (EF001257)	Stainless steel 316 (1.4401)
Surface protection (EF000139)	*
Colour (EF000007)	*
RAL (EF000116)	*

Logistic

Pack 1 type	Each
Quantity pack 1	1
Weight pack 1	0.6 kg
Length pack 1	348 mm
Width pack 1	40 mm
Height pack 1	105 mm
Pack 4 type	Pallet
Quantity pack 4	200
Weight pack 4	150 kg
Length pack 4	1200 mm
Width pack 4	800 mm
Height pack 4	340 mm
Customs code	73089059
Net weight	0.6 kg
Country of origin	SE

Certification

ETIM class	EC000022
------------	----------

Environmental

GWP Total A1-A3	3.504 kgCO2e
-----------------	--------------

Product downloads

For the latest information check <http://wibe-group.com/cable-support-systems/cable-trays/cantilevers-central-suspension-brackets/cantilever-arm-50-300-aisi316>