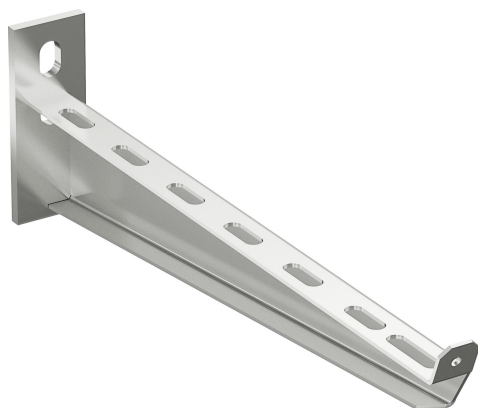


# Cantilever arm 50-400 AISI316L

Reference 725623



Activity  
Product family  
Brand

Cable support systems  
Support system  
Wibe

## Status product

Product status

Commercialized

## Commercial and Web

Short description

Cantilever arm 50-400 AISI316L

Medium description

Wibe - cantilever arm 50-400 - stainless steel AISI316L

Width

400 mm

Material

Stainless steel

Material type or surface treatment

AISI316L

Environmental corrosion class

CX

## Base

Activity

Cable support systems

Product family

Support system

Brand

Wibe

GTIN

7321677256235

## ETIM (EC000022-Bracket for cable support system)

Length (EF001438)

450 mm

Width (EF000008)

50 mm

Height (EF000040)

120 mm

Suitable for cable management system width (EF008339)	100 - 400 mm
Model (EF000010)	Wall- and profile console
Angle (EF005434)	90 - 90 °
Load bearing capacity (EF002918)	6.5 kN
Suitable for circuit integrity (EF007806)	No
Material (EF002169)	Stainless steel
Material quality (EF001257)	Stainless steel 316 (1.4401)
Surface protection (EF000139)	*
Colour (EF000007)	*
RAL (EF000116)	*

## Logistic

Pack 1 type	Each
Quantity pack 1	1
Weight pack 1	1.3 kg
Length pack 1	447 mm
Width pack 1	50 mm
Height pack 1	120 mm
Pack 4 type	Pallet
Quantity pack 4	100
Weight pack 4	160 kg
Length pack 4	1200 mm
Width pack 4	800 mm
Height pack 4	340 mm
Customs code	73089059
Net weight	1.3 kg
Country of origin	SE

## Certification

ETIM class	EC000022
------------	----------

## Environmental

GWP Total A1-A3	7.592 kgCO2e
-----------------	--------------

## Product downloads

For the latest information check <http://wibe-group.com/cable-support-systems/cable-trays/cantilevers-central-suspension-brackets/cantilever-arm-50-400-aisi316>