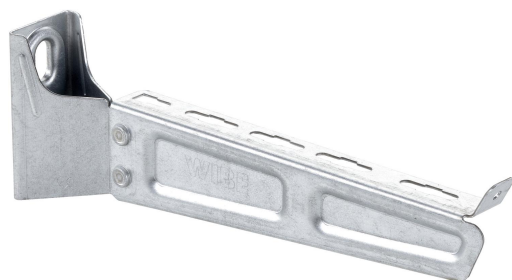


Cantilever arm 50i-400 PG

Reference 791415



Activity
Product family
Brand

Cable support systems
Support system
Wibe

Status product

Product status

Commercialized

Commercial and Web

Short description

Cantilever arm 50i-400 PG

Medium description

Wibe - cantilever arm 50i-400 mm - steel pre-galvanized

Width

400 mm

Material

Steel

Material type or surface treatment

Pre-galvanized

Environmental corrosion class

C2

Base

Activity

Cable support systems

Product family

Support system

Brand

Wibe

GTIN

7321677914159

ETIM (EC000022-Bracket for cable support system)

Length (EF001438)

450 mm

Width (EF000008)

400 mm

Height (EF000040)

115 mm

Suitable for cable management system width (EF008339)

100 - 400 mm

Model (EF000010)

Wall- and profile console

Angle (EF005434)	90 - 90 °
Load bearing capacity (EF002918)	2.35 kN
Suitable for circuit integrity (EF007806)	No
Material (EF002169)	Steel
Material quality (EF001257)	Other
Surface protection (EF000139)	Continuously galvanized
Colour (EF000007)	*
RAL (EF000116)	*

Logistic

Pack 1 type	Each
Quantity pack 1	1
Weight pack 1	0.83 kg
Length pack 1	461 mm
Width pack 1	44 mm
Height pack 1	115 mm
GTIN pack 1	7321677914159
Pack 4 type	Pallet
Quantity pack 4	200
Weight pack 4	203 kg
Length pack 4	1200 mm
Width pack 4	800 mm
Height pack 4	340 mm
Customs code	73089059
Net weight	0.83 kg
Country of origin	SE

Certification

ETIM class	EC000022
------------	----------

Environmental

GWP Total A1-A3	2.357 kgCO2e
-----------------	--------------

Product downloads

For the latest information check <http://wibe-group.com/cable-support-systems/cable-trays/cantilevers-central-suspension-brackets/cantilever-arm-50i-400-pre-galv>