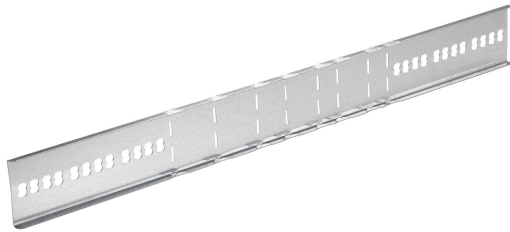


# Stop end/uni reducer piece H=60 L=605 PG

Reference CSU08940000



Activity	Cable support systems
Product family	Cable trays
Brand	Stago

## Base

Activity	Cable support systems
Product family	Cable trays
Brand	Stago
GTIN	8712186006449

## Commercial and Web

Short description	Stop end/uni reducer piece H=60 L=605 PG
Medium description	Stago - KG281 stop end / reducer - 60x605 - steel PG
Material	Steel
Material type or surface treatment	Pre-galvanized
Corrosion class	C2

## ETIM (EC002413-Connector for cable support system)

Model (EF000010)	Longitudinal joint
Hinged joint horizontal (EF006392)	No
Hinged joint vertical (EF006393)	No
Type of connection (EF000064)	Screw connector
Suitable for wire mesh tray (EF005163)	No
Suitable for cable ladder (EF005165)	No
Suitable for cable tray (EF005166)	Yes
Suitable for cable management system width (EF008339)	70-330 mm
Suitable for cable management system height (EF006391)	60 mm

Suitable for mesh cable tray filament (EF005164)	60-60 mm
Length (EF001438)	* mm
Suitable for circuit integrity (EF007806)	No
Material (EF002169)	Steel
Stainless steel, pickled (EF006388)	No
Material quality (EF001257)	Other
Surface protection (EF000139)	Continuously galvanized
Colour (EF000007)	*
RAL (EF000116)	*

---

## Logistic

Weight pack 1	0.345 kg
Length pack 1	605 mm
Width pack 1	10 mm
Height pack 1	64 mm
Customs code	73089098
Net weight	0.35 kg
Country of origin	NL

---

## Certification

ETIM class	EC002413
------------	----------

---

## Status product

Product status	Commercialized
----------------	----------------

---

## Environmental

GWP Total A1-A3	0.85 kgCO2e
-----------------	-------------

---

For the latest information check <http://wibe-group.com/cable-support-systems/cable-trays/accessories/reducer-l-605-60-pg>