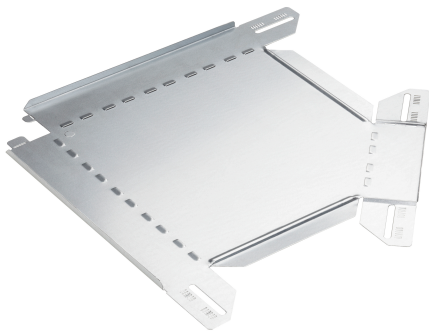


# Corner piece 90 300mm

Reference CSU36063002



Activity  
Product family  
Brand

Cable support systems  
Cable trays  
Stago

## Base

Activity	Cable support systems
Product family	Cable trays
Brand	Stago
GTIN	8712186064050

## Commercial and Web

Short description	Corner piece 90 300mm
Medium description	Stago - horizontal bend 90° flat 60x300mm pre-galvanized
Material	Steel
Material type or surface treatment	Pre-galvanized
Corrosion class	C2

## ETIM (EC002400-Bend for cable tray)

Change of direction (EF005210)	Horizontal
Angle (EF001218)	90°
Construction type (EF000767)	Bend rigid
Bend model (EF020423)	Segmental bend
With cover (EF007965)	No
Inner radius (EF004793)	100 mm
Cable tray height (EF004822)	60 mm
Cable tray width (EF004820)	300 mm

Material thickness (EF000386)	0.8 mm
Side wall perforation (EF001122)	No
Mounting perforation in bottom (EF004545)	No
NATO (EF006059)	No
Model (EF000010)	Without connector
Wide span model (EF006397)	No
Suitable for circuit integrity (EF007806)	No
Material (EF002169)	Steel
Stainless steel, pickled (EF006388)	No
Material quality (EF001257)	Other
Surface protection (EF000139)	Continuously galvanized
Colour (EF000007)	*
RAL (EF000116)	*

---

## Logistic

Quantity pack 1	1
Weight pack 1	1.392 kg
Length pack 1	547 mm
Width pack 1	547 mm
Height pack 1	10 mm
GTIN pack 1	8712186064050
Customs code	73089098
Net weight	1.39 kg
Country of origin	NL

---

## Certification

ETIM class	EC002400
------------	----------

---

## Status product

Product status	Commercialized
----------------	----------------

---

## Environmental

GWP Total A1-A3	3.44 kgCO2e
-----------------	-------------

---

For the latest information check <http://wibe-group.com/cable-support-systems/cable-trays/form-pieces/corner-piece-90-300mm>