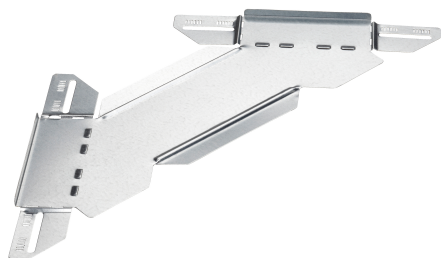


Branching Piece 60x200 PG

Reference CSU36072002



Activity
Product family
Brand

Cable support systems
Cable trays
Stago

Base

Activity	Cable support systems
Product family	Cable trays
Brand	Stago
GTIN	8712186064258

Commercial and Web

Short description	Branching Piece 60x200 PG
Medium description	Stago - branching piece flat 60x200mm pre-galvanized
Width	200 mm
Material	Steel
Material type or surface treatment	Pre-galvanized
Corrosion class	C2

ETIM (EC001006-Add-on tee for cable tray)

Cable tray height (EF004822)	60 mm
Cable tray branch width (EF004819)	200 mm
Inner radius (EF004793)	100 mm
NATO (EF006059)	No
Model (EF000010)	Without connector
Wide span model (EF006397)	No
Suitable for circuit integrity (EF007806)	No
Material (EF002169)	Steel

Stainless steel, pickled (EF006388)	No
Material quality (EF001257)	Other
Surface protection (EF000139)	Continuously galvanized
Colour (EF000007)	*
RAL (EF000116)	*

Logistic

Weight pack 1	0.427 kg
Length pack 1	571 mm
Width pack 1	213 mm
Height pack 1	10 mm
Customs code	73089098
Net weight	0.43 kg
Country of origin	NL

Certification

ETIM class	EC001006
------------	----------

Status product

Product status	Commercialized
----------------	----------------

Environmental

GWP Total A1-A3	1.05 kgCO2e
-----------------	-------------
