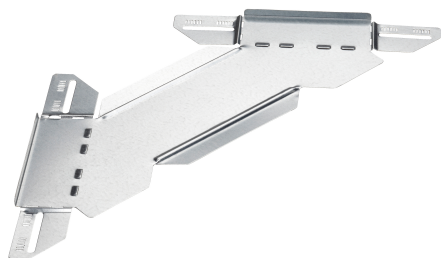


# Branching Piece 60x300 PG

Reference CSU36073002



Activity  
Product family  
Brand

Cable support systems  
Cable trays  
Stago

## Base

Activity	Cable support systems
Product family	Cable trays
Brand	Stago
GTIN	8712186064272

## Commercial and Web

Short description	Branching Piece 60x300 PG
Medium description	Stago - branching piece flat 60x300mm pre-galvanized
Width	300 mm
Material	Steel
Material type or surface treatment	Pre-galvanized
Corrosion class	C2

## ETIM (EC001006-Add-on tee for cable tray)

Cable tray height (EF004822)	60 mm
Cable tray branch width (EF004819)	300 mm
Inner radius (EF004793)	100 mm
NATO (EF006059)	No
Model (EF000010)	Without connector
Wide span model (EF006397)	No
Suitable for circuit integrity (EF007806)	No
Material (EF002169)	Steel

Stainless steel, pickled (EF006388)	No
Material quality (EF001257)	Other
Surface protection (EF000139)	Continuously galvanized
Colour (EF000007)	*
RAL (EF000116)	*

---

## Logistic

Weight pack 1	0.505 kg
Length pack 1	671 mm
Width pack 1	213 mm
Height pack 1	10 mm
Customs code	73089098
Net weight	0.51 kg
Country of origin	NL

---

## Certification

ETIM class	EC001006
------------	----------

---

## Status product

Product status	Commercialized
----------------	----------------

---

## Environmental

GWP Total A1-A3	1.25 kgCO2e
-----------------	-------------

---