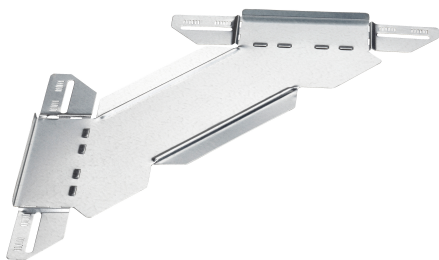


Branching Piece 60x400 PG

Reference CSU36074002



Activity
Product family
Brand

Cable support systems
Cable trays
Stago

Base

| | |
|----------------|-----------------------|
| Activity | Cable support systems |
| Product family | Cable trays |
| Brand | Stago |
| GTIN | 8712186064296 |

Commercial and Web

| | |
|------------------------------------|--|
| Short description | Branching Piece 60x400 PG |
| Medium description | Stago - branching piece flat 60x400mm pre-galvanized |
| Width | 400 mm |
| Material | Steel |
| Material type or surface treatment | Pre-galvanized |
| Corrosion class | C2 |

ETIM (EC001006-Add-on tee for cable tray)

| | |
|---|-------------------|
| Cable tray height (EF004822) | 60 mm |
| Cable tray branch width (EF004819) | 400 mm |
| Inner radius (EF004793) | 100 mm |
| NATO (EF006059) | No |
| Model (EF000010) | Without connector |
| Wide span model (EF006397) | No |
| Suitable for circuit integrity (EF007806) | No |
| Material (EF002169) | Steel |

| | |
|-------------------------------------|-------------------------|
| Stainless steel, pickled (EF006388) | No |
| Material quality (EF001257) | Other |
| Surface protection (EF000139) | Continuously galvanized |
| Colour (EF000007) | * |
| RAL (EF000116) | * |

Logistic

| | |
|-------------------|----------|
| Weight pack 1 | 0.574 kg |
| Length pack 1 | 771 mm |
| Width pack 1 | 213 mm |
| Height pack 1 | 10 mm |
| Customs code | 73089098 |
| Net weight | 0.57 kg |
| Country of origin | NL |

Certification

| | |
|------------|----------|
| ETIM class | EC001006 |
|------------|----------|

Status product

| | |
|----------------|----------------|
| Product status | Commercialized |
|----------------|----------------|

Environmental

| | |
|-----------------|-------------|
| GWP Total A1-A3 | 1.42 kgCO2e |
|-----------------|-------------|
