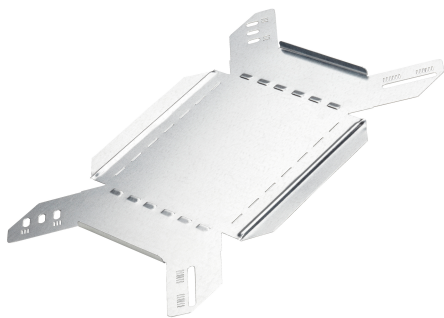


# Internal bend 90 150mm

Reference CSU36231502



Activity  
Product family  
Brand

Cable support systems  
Cable trays  
Stago

## Base

Activity	Cable support systems
Product family	Cable trays
Brand	Stago
GTIN	8712186065361

## Commercial and Web

Short description	Internal bend 90 150mm
Medium description	Stago - internal riser flat - 60x150 mm - steel - pre-galvanized
Material	Steel
Material type or surface treatment	Pre-galvanized
Corrosion class	C2

## ETIM (EC002400-Bend for cable tray)

Change of direction (EF005210)	Vertically rising
Angle (EF001218)	90°
Construction type (EF000767)	Bend rigid
Bend model (EF020423)	Segmental bend
With cover (EF007965)	No
Inner radius (EF004793)	180 mm
Cable tray height (EF004822)	60 mm
Cable tray width (EF004820)	150 mm
Material thickness (EF000386)	1 mm

Side wall perforation (EF001122)	No
Mounting perforation in bottom (EF004545)	No
NATO (EF006059)	No
Model (EF000010)	Without connector
Wide span model (EF006397)	No
Suitable for circuit integrity (EF007806)	No
Material (EF002169)	Steel
Stainless steel, pickled (EF006388)	No
Material quality (EF001257)	Other
Surface protection (EF000139)	Continuously galvanized
Colour (EF000007)	*
RAL (EF000116)	*

---

## Logistic

Quantity pack 1	1
Weight pack 1	0.424 kg
Length pack 1	367 mm
Width pack 1	270 mm
Height pack 1	10 mm
GTIN pack 1	8712186065361
Customs code	73089098
Net weight	0.42 kg
Country of origin	NL

---

## Certification

ETIM class	EC002400
------------	----------

---

## Status product

Product status	Commercialized
----------------	----------------

---

## Environmental

GWP Total A1-A3	1.05 kgCO2e
-----------------	-------------

---

For the latest information check <http://wibe-group.com/cable-support-systems/cable-trays/form-pieces/internal-bend-90-150mm>