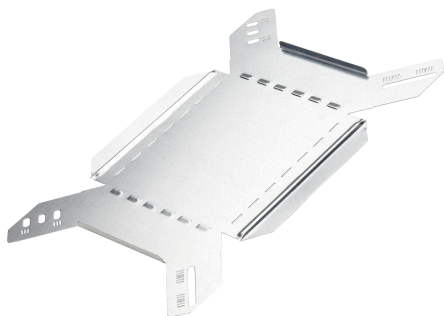


Internal riser flat 60x250 Pre-Galv

Reference CSU36232502



Activity
Product family
Brand

Cable support systems
Cable trays
Stago

Base

Activity	Cable support systems
Product family	Cable trays
Brand	Stago
GTIN	8712186065385

Commercial and Web

Short description	Internal riser flat 60x250 Pre-Galv
Medium description	Stago - internal riser flat - 60x250 mm - steel - pre-galvanized
Width	250 mm
Material	Steel
Material type or surface treatment	Pre-galvanized
Corrosion class	C2

ETIM (EC002400-Bend for cable tray)

Change of direction (EF005210)	Vertically rising
Angle (EF001218)	90°
Construction type (EF000767)	Bend rigid
Bend model (EF020423)	Segmental bend
With cover (EF007965)	No
Inner radius (EF004793)	180 mm
Cable tray height (EF004822)	60 mm
Cable tray width (EF004820)	250 mm

Material thickness (EF000386)	1 mm
Side wall perforation (EF001122)	No
Mounting perforation in bottom (EF004545)	No
NATO (EF006059)	No
Model (EF000010)	Without connector
Wide span model (EF006397)	No
Suitable for circuit integrity (EF007806)	No
Material (EF002169)	Steel
Stainless steel, pickled (EF006388)	No
Material quality (EF001257)	Other
Surface protection (EF000139)	Continuously galvanized
Colour (EF000007)	*
RAL (EF000116)	*

Logistic

Quantity pack 1	1
Weight pack 1	0.581 kg
Length pack 1	467 mm
Width pack 1	270 mm
Height pack 1	10 mm
GTIN pack 1	8712186065385
Customs code	73089098
Net weight	0.58 kg
Country of origin	NL

Certification

ETIM class	EC002400
------------	----------

Status product

Product status	Commercialized
----------------	----------------

Environmental

GWP Total A1-A3	1.44 kgCO2e
-----------------	-------------

For the latest information check <http://wibe-group.com/cable-support-systems/cable-trays/form-pieces/internal-riser-flat-60x250-pre-galv>