

FRP/GRP Cable Management System



COMPOSITE
SOLUTIONS
FOR HARSH
ENVIRONMENTS

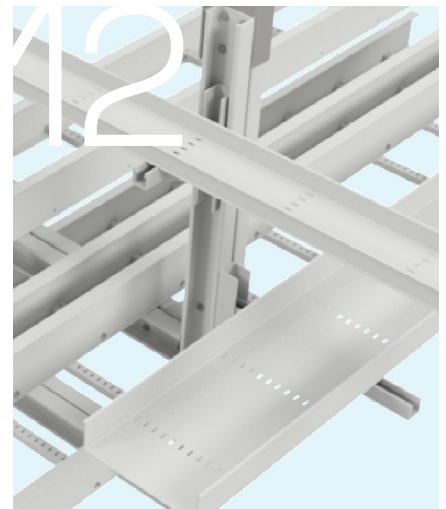




mita[®]

Content

04	Wibe Group
06	Mita Flex Our FRP/GRP Cable Management Solutions for harsh corrosive environments
10	MultiFlex Support System Flexible components, offering freedom of installation
14	Cable Ladders
26	Cable Trays
34	Accessories
35	Bolt & Bolt sets
36	Technical information Safety, Material, Product Standards, Certifications & Chemical Exposure Guide



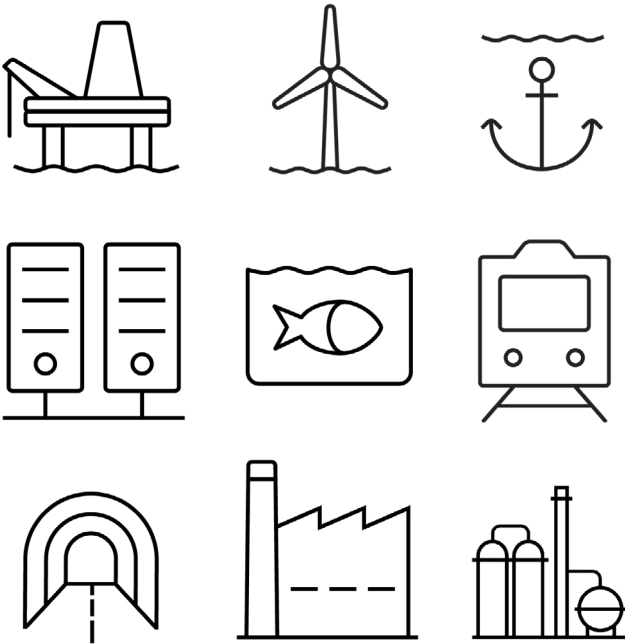
Wibe Group presents; Mita Flex FRP/GRP Cable Management Solution

Welcome into our new catalogue presenting Mita Flex with Multi-Flex Support System – created for your bespoke configuration and freedom of installation. Discover the power of flexibility for harsh corrosive environments.



Creating clever,
uplifting solutions,
together with our
clients for almost
100 years.

Mita Flex – our range of FRP/GRP cable management solutions for harsh corrosive environments



Mita Flex relates to our newest range of FRP/GRP pultruded cable management solutions, including cable ladders, cable trays, all related formpieces and accessories, as well as a new innovative and flexible support system, needed for a professional installation.

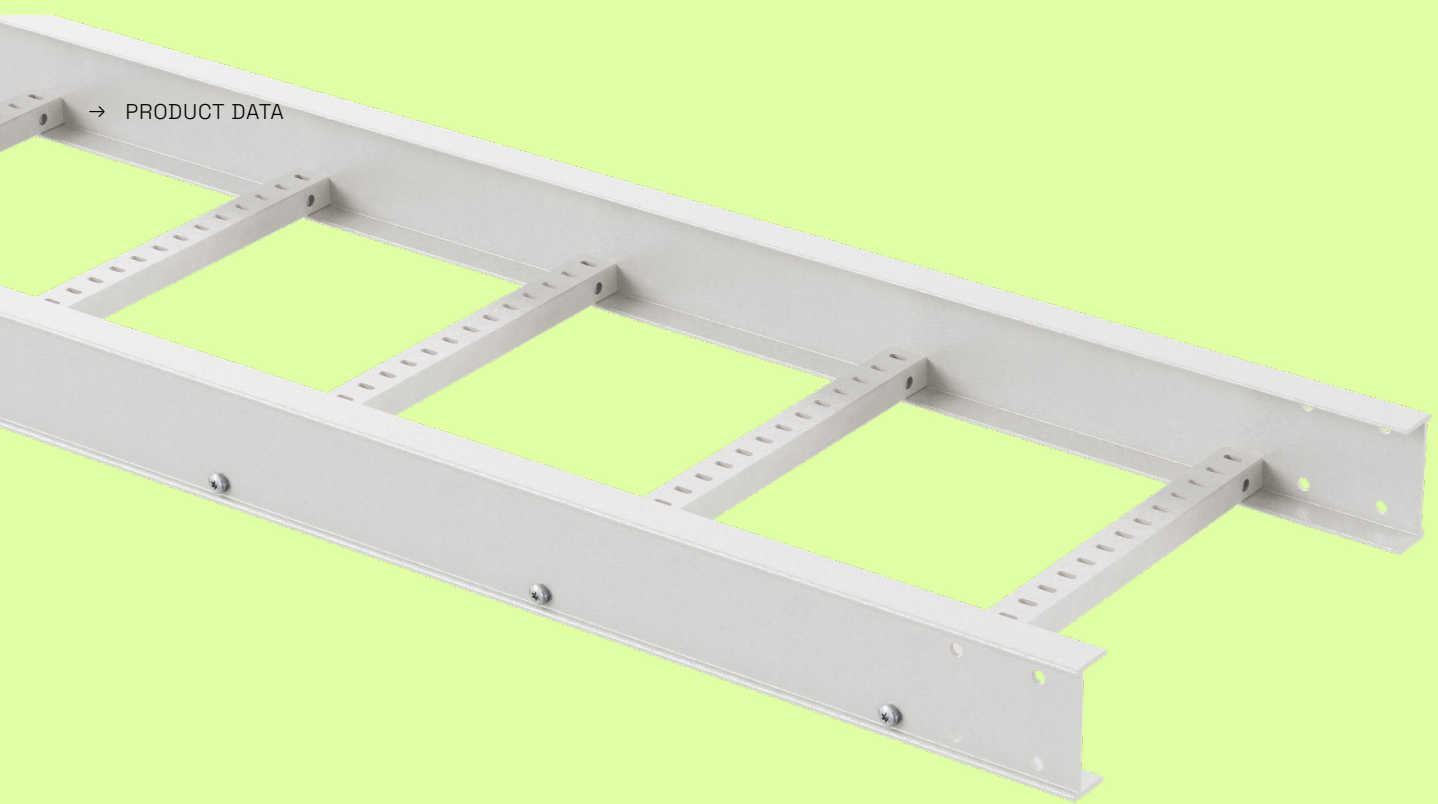
As the materials are produced in FRP/GRP, they are perfectly suited to be installed in harsh environments under harsh corrosive circumstances. Examples of such applications are:

- Oil and gas
- Wind energy
- Industry e.g. petrochemical, water treatment
- Infrastructure e.g. tunnels
- Datacenters
- Fish farms
- Marine

Mita

High performance leader in Glass Fibre Polymer (GRP) ladder and tray system. Top-tier corrosion resistance, anti-static and non-conductive solutions tailored for harsh environments and applications.





What is FRP/GRP?

FRP/GRP refers to Glass fibre Reinforced Polymer, meaning it is a man-made resin based material which makes it a polymer, reinforced with glass fibre.

Polymer itself is extremely strong. It is a fiber material and in contrary to how it sounds it is very durable. It is resistant to most chemicals, stretching and shrinking, resistant to mildew and abrasion as well. When it is reinforced with glass, it becomes a structural polymer. Further

to these, GRP does not conduct heat. It has extra durability to adverse weather conditions and has UV stability which makes it an excellent candidate for outdoor applications, even for Wind substations built in the middle of the sea.

Long service life

- UV-resistant
- Corrosion resistance
- High chemical resistance
- Low maintenance

Insulation

- Excellent electrical insulator
- No earth needed
- Excellent cable protection
- Low thermal conductivity
- High dielectric strength

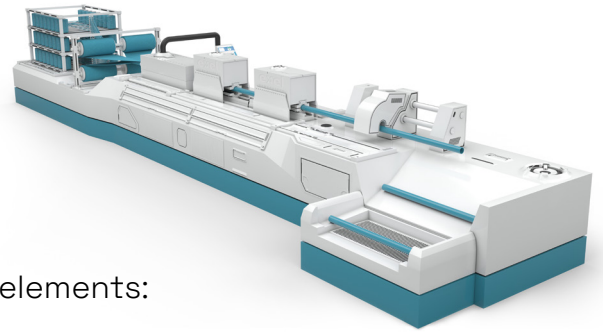
Fire resistance

- Low thermal propagation
- Halogen free
- Self-extinguishing material
- Lower toxic fumes

Materials

- Light, flexible and robust
- Light weight & very strong
- None sparking
- UV resistance
- High mechanical resistance
- High temperature resistance
- Optimized design to reduce volume and handling

Mita Flex FRP/GRP is pultruded for optimal strength



Pultruded Composites consist of four or five main elements:

- 1) Glass rovings (strands) and mats -approx. 50% by weight
- 2) Resin - usually Polyester
- 3) Filler - usually Calcium Carbonate
- 4) UV Veil and UV additives
- 5) Fire Retardants as required

Pultruded composites remain largely impervious to corrosion regardless of application.

Resin types for any kind of application

Mita® Flex offers 4 main resin types to accommodate the requirements of various industrial applications which can be in chemically aggressive, demanding environments.

Polyester Class 1 (PC1)

Colour RAL7047

Polyester is the most widely used resin. It offers good weathering properties with resistance to ultraviolet light and offers resistance to corrosion. Our polyester resin has been specially formulated to meet certain fire and smoke standards and can be classified as a "class 1" resin in accordance with BS476 P7 and ASTM E84.

Acrylic (AC)

Colour RAL7047

Acrylic is a formula that meets or exceeds the most stringent low flame, smoke and toxicity standards in the market today. Typical applications such as tunnels, mass transit, enclosed areas or needs where low flame, smoke and toxicity levels are critical.

Vinylester (VE)

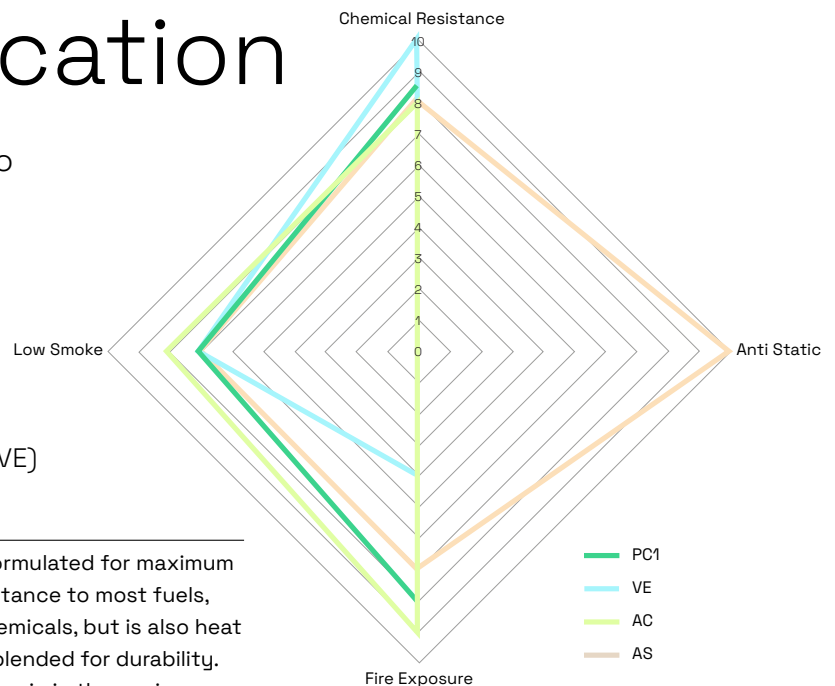
Colour RAL7047

Vinylester is formulated for maximum corrosion resistance to most fuels, vapors and chemicals, but is also heat resistant and blended for durability. It's a common resin in the marine industry due to its excellent corrosion resistance and ability to withstand water absorption.

Polyester with anti-static properties (AS)

Colour RAL9004

Polyester resin can be given anti-static properties to meet specific project requirements. Anti-static resins contain carbon powder, which increases the conductivity of the material and as a result this material requires grounding.



All FRP/GRP materials are standard available in Polyester Class 1 - article numbers with suffix PC1. To obtain article numbers for materials in other available resins, Polyester Antistatic (AS), Vinyl Ester (VE) and Acrylic (AC), simply replace the "PC1" suffix at the end of the article number with "AS", "VE" and "AC" respectively.

For example, cable ladder LM100 CL-150-3000;

MLM1142PC1 for material in PC1
 MLM1142AS for material in AS
 MLM1142PVE for material in VE
 MLM1142PAC for material in AC

Introducing Our MultiFlex Support System

A versatile system of interchangeable parts that provides complete flexibility during installation and enables genuine bespoke configurations. It is designed to support heavy cables and offers adjustment in every direction. The system allows for creating flexible fixation points wherever needed for heavy cables thus securing complete installation adaptability.



GRP/FRP Support channels are designed to reduce weight while maintaining strength and maximizing loading capacity. The MultiFlex system offers ergonomic benefits while handling and installing ladders and support system equipment. The support channels are available in multiple polyester resin material, each carefully designed to fit specific project requirements. Our innovative support system comes with a wide range of smart and practical features which simplify and improve the installation process.

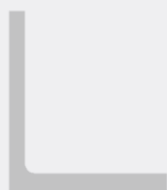
Profiles Used



SUPPORT Channel



SLEEVE Channel



ANGLE Channel

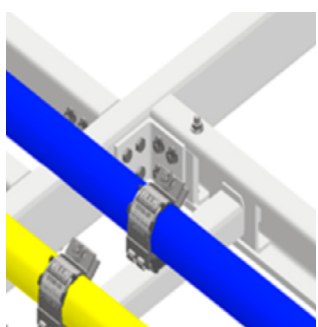
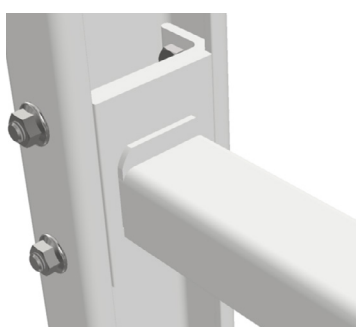
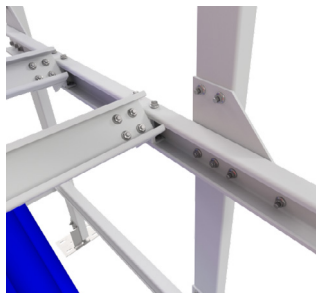
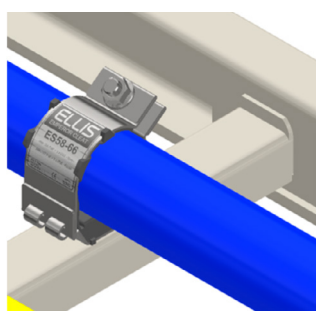
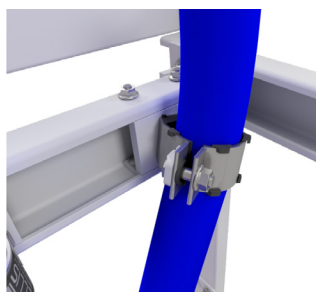
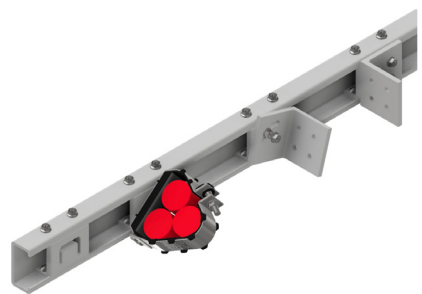
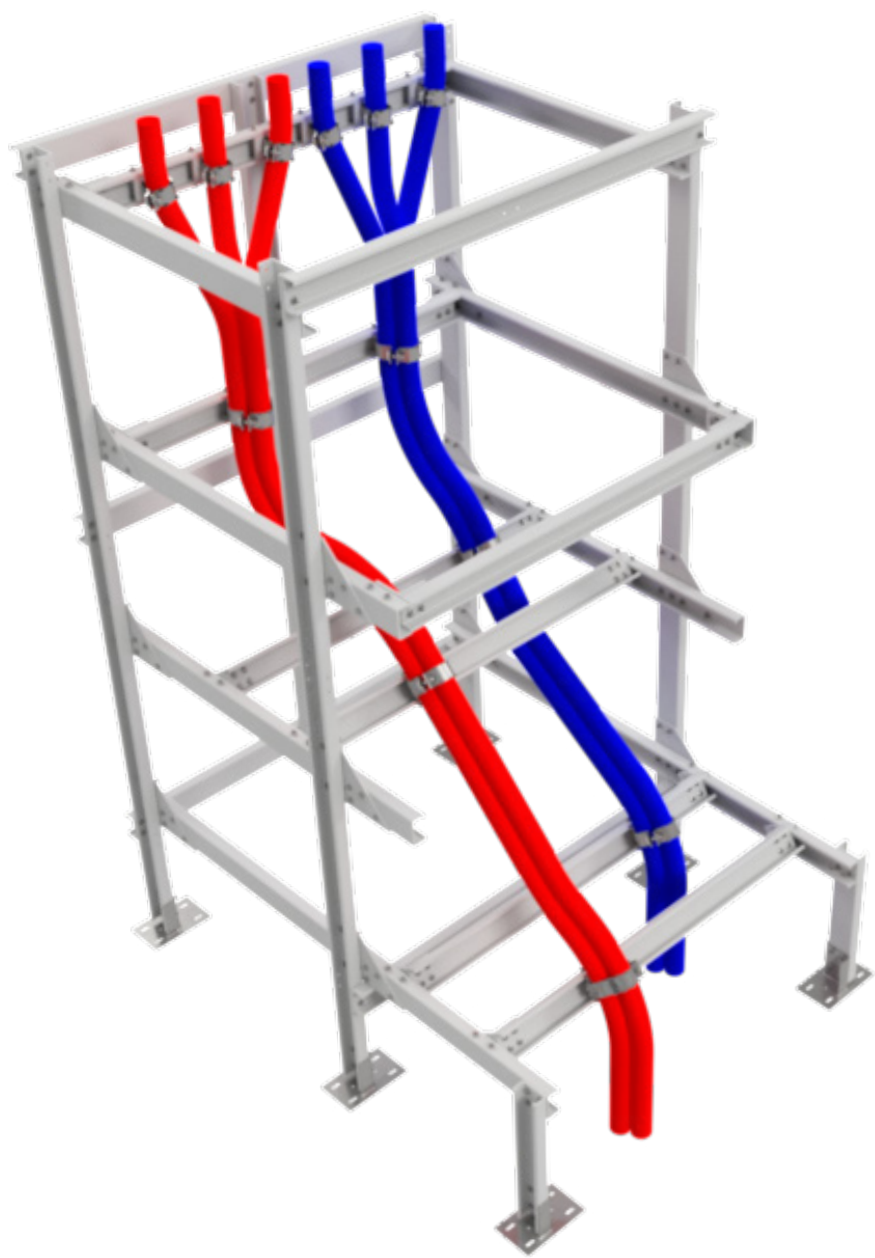


FLAT Sheet

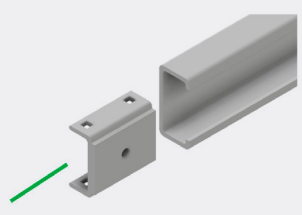


RUNG Channel

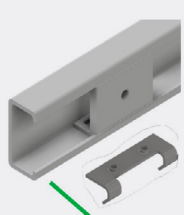
CONTACT US FOR
DESIGN & ENGINEERING
SERVICES FOR YOUR
PROJECT



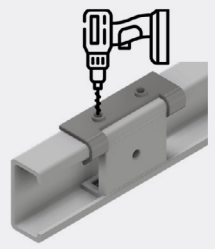
How it works



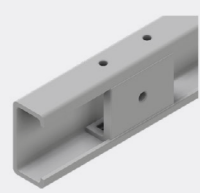
Insert sleeve into channel



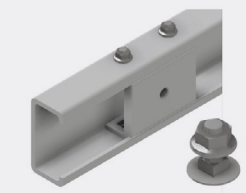
Position sleeve, apply drill jig



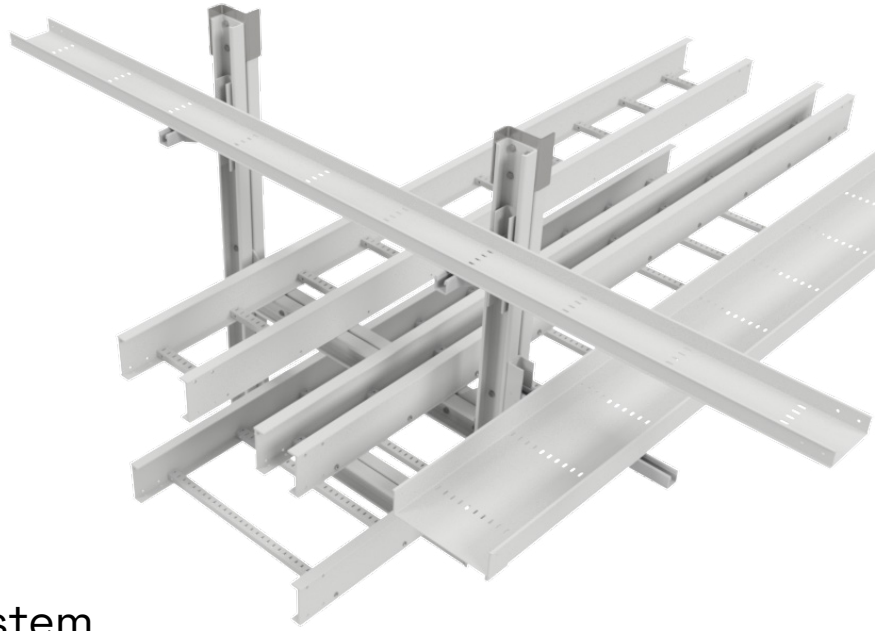
Drill the required holes



Now holes are all drilled quick and easy



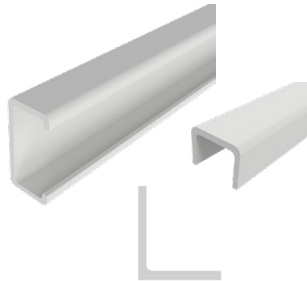
Insert the bolts and tighten the nuts



MultiFlex Support System

Channel Support Profile

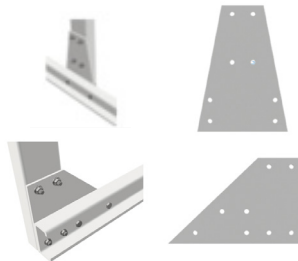
Support Channels for a robust yet flexible framework.



Product	Ref No	Kg
Channel Sup profile SC100-50/6 3m PC1	MS4101PC1	
Channel Sup profile SC100-50/6 6m PC1	MS4129PC1	
Channel Sup profile SC53-40 3m PC1	MS4131PC1	
Channel Sup profile SC53-40 6m PC1	MS4130PC1	
Channel sup angel profile 100x100x10/6	MS4191PC11	
Channel sup angle profile 100x100x10/3	MS4190PC1	

Gusset Plate

Are used to strengthen central joints or corners that could need more bracing because of increasing loading.



Product	Ref No	Kg
Gusset Plate T CH100 6mm	MS4103PC1	
Gusset Plate L CH100 6mm	MS4102PC1	

Spacer Plate B2B channel 100x100x6



Product	Ref No	Kg
Spacer Plate B2B channel 100x100x3	MS2143PC1	

Channel Sleeve Rung PC1

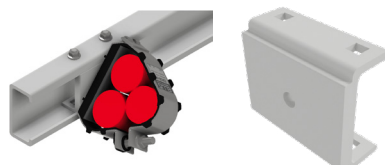
Rungs from 200 mm - 1000 mm are available on request.



Product	Ref No	Kg
Channel Sleeve / Rung Hor PC1	MS4181PC1	
Channel Sleeve / Rung Vert PC1	MS4189PC1	
Lock Plate LP53 PC1	MS4107PC1	

Channel Sleeve Cleat

Channel sleeve with M12 hole for Cleat fixations.



Product	Ref No	Kg
Channel Sleeve Cleat	MS4182PC1	

Channel Sleeve PC1

Channel sleeve with five M10 hole for Flexi Angle and Angle Brackets.



Product	Ref No	Kg
Channel Sleeve PC1	MS4183PC1	

Angle Bracket PC1

When combined with channel sleeve, allows sliding adjustability with a fixed angle inside the support channels. Fasteners needed M4825SS M10 x 35 and coach headbolts



Product	Ref No	Kg
Angle Bracket PC1	MS4184PC1	

Flexi Angle Bracket PC1

When combined with channel sleeve - angle fitting, allows for sliding and angular adjustability inside the support channels. Fasteners needed M4825SS M10 x 35 and coach headbolts



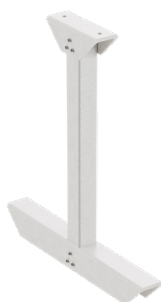
Product	Ref No	Kg
Flexi Angle Bracket PC1	MS4186PC1	

L-bracket



Product	Height	Ref No	Kg
L Support Bracket 200PC1	0,6m	MS4165PC1	3,3
L Support Bracket 300 PC1	0,6m	MS4166PC1	3,5
L Support Bracket 400 PC1	0,6m	MS4167PC1	3,7
L Support Bracket 600 PC1	0,6m	MS4169PC1	4,2

Central support



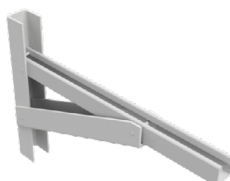
Product	Height	Ref No	Kg
Central Support 200 PC1	0.5m	MS41655PC1	1.2
Central Support 200 PC1	1.0m	MS416510PC1	1.8
Central Support 300 PC1	0.5m	MS41605PC1	1.3
Central Support 300 PC1	1.0m	MS416010PC1	1.9
Central Support 400 PC1	0.5m	MS41615PC1	1.4
Central Support 400 PC1	1.0m	MS416110PC1	2
Central Support 600 PC1	0.5m	MS41635PC1	1.8
Central Support 600 PC1	1.0m	MS416310PC1	2.3

LW Cantilever Arm



Product	Ref No	Kg
LW Cantilever Arm 50 PC1	MS4197PC1	0,5
LW Cantilever Arm 100 PC1	MS4198PC1	0,5
LW Cantilever Arm 150 PC1	MS4199PC1	0,6
LW Cantilever Arm 200 PC1	MS4200PC1	0,6
LW Cantilever Arm 300 PC1	MS4201PC1	0,8
LW Cantilever Arm 400 PC1	MS4202PC1	0,9

HD Cantilever Arm

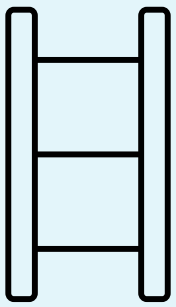


Product	Ref No	Kg
HD Cantilever Arm 150 PC1	MCS4120PC1	1
HD Cantilever Arm 200 PC1	MCS4121PC1	1,2
HD Cantilever Arm 300 PC1	MCS4122PC1	1,6
HD Cantilever Arm 400 PC1	MCS4125PC1	
HD Cantilever Arm 450 PC1	MCS4123PC1	1,9
HD Cantilever Arm 600 PC1	MCS4124PC1	2,2

Channel Spring Nut M10 PC1



Product	Ref No	Kg
Channel Spring Nut M10 PC1	M4829PC1	



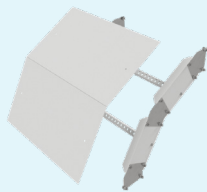
Cable Ladders overview

Mita Flex offers a complete range of composite cable ladders, including fittings and accessories, available in three series, LM100, LMP150 and LH150.

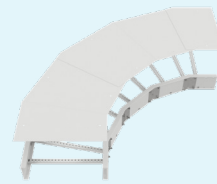
The FRP/GRP cable ladders are light, yet strong and corrosion resistant. They are designed to deliver high performance, maximum load capacity with reduced weight and improved handling, allowing easy and quick installation. The cable ladders are available in a variety of resin types.



Straight Length



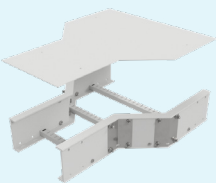
Flexi Riser



90° Flat Elbow



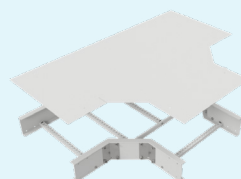
End Plate



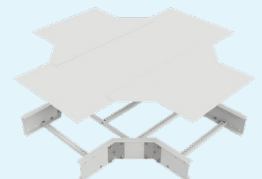
Reducer



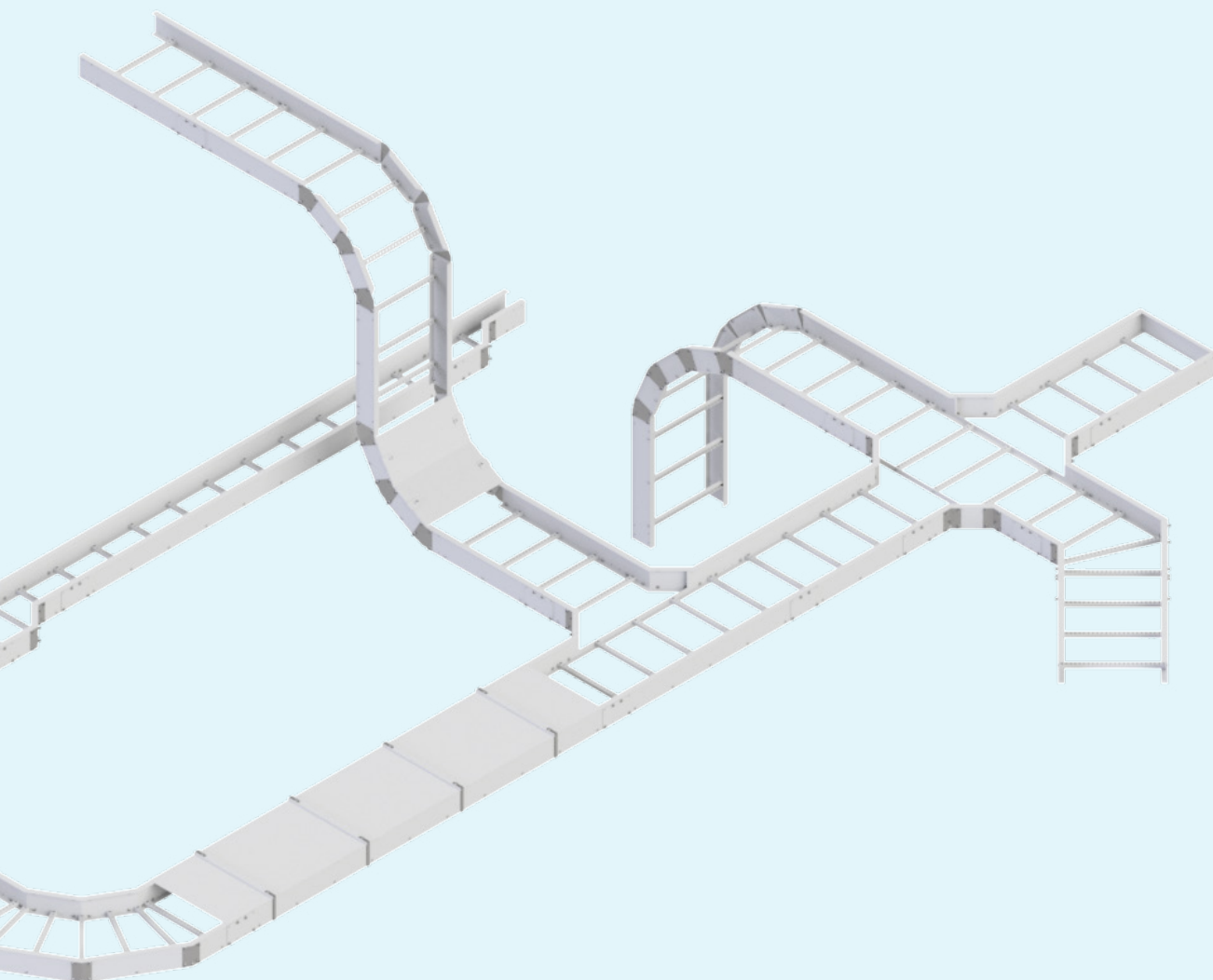
45° Flat Elbow



Tee



Cross



Cable Ladder Type	Resin Selection	Rail Height (mm)	Working Depth	Rung Fixation	SWL 3m(kg/m)	Length (m)	Nema FG1 / UL568
LM100	PC1 - Polyester Class 1 AS - Polyester Antistatic VE - Vinyl ester AC - Acrylic	100	70	✓	200	3 *	12C
LMP150	PC1 - Polyester Class 1 AS - Polyester Antistatic VE - Vinyl ester AC - Acrylic	150	120	✓	250	3/6 *	16B
LH150	PC1 - Polyester Class 1 AS - Polyester Antistatic VE - Vinyl ester AC - Acrylic	150	120	✓	350	3/6 *	20C

SWL according to IEC 61537, Test Type 3 with reduced end span 3/4 | For NEMA F61 Load rating. Technical Department to be contacted.

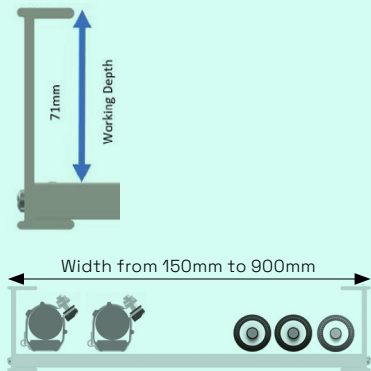
* Alternative lengths available on request

Composite Cable Ladder range for supporting cables.

- Tested to IEC & NEMA Standards for SWL
- Ladder heights 100mm & 150mm
- Length 3000mm & 6000mm
- Material: FRP Polyester Class 1 (Other Resins are available)

Cable Ladder LM100

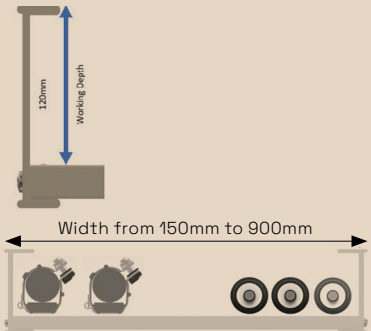
Cable ladder with system height 100mm, used for medium duty applications.



Product	Ref No	Kg
CL-150-3000	MLM1142PC1	9,2
CL-200-3000	MLM1148PC1	9,5
CL-300-3000	MLM1143PC1	10
CL-400-3000	MLM1155PC1	10,6
CL-450-3000	MLM1144PC1	10,9
CL-600-3000	MLM1145PC1	11,7
CL-750-3000	MLM1146PC1	12,5
CL-900-3000	MLM1147PC1	13,3
CL-150-6000	MLM1149PC1	18,4
CL-200-6000	MLM1156PC1	19
CL-300-6000	MLM1150PC1	20,1
CL-400-6000	MLM1157PC1	21,2
CL-450-6000	MLM1151PC1	21,7
CL-600-6000	MLM1152PC1	23,4
CL-750-6000	MLM1153PC1	25
CL-900-6000	MLM1154PC1	26,6

Cable Ladder LMP150

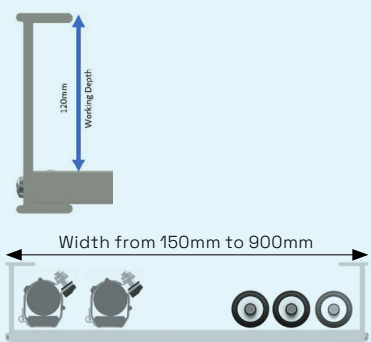
Cable ladder with system height 150mm, used for multi-purpose applications.



Product	Ref No	Kg
CL-150-3000	MMP1136PC1	13,8
CL-300-3000	MMP1137PC1	14,7
CL-450-3000	MMP1138PC1	15,7
CL-600-3000	MMP1139PC1	15,6
CL-750-3000	MMP1140PC1	17,5
CL-900-3000	MMP1141PC1	18,4
CL-150-6000	MMP1695PC1	27,6
CL-300-6000	MMP1696PC1	29,6
CL-450-6000	MMP1697PC1	31,4
CL-600-6000	MMP1698PC1	33,3
CL-750-6000	MMP1699PC1	35,1
CL-900-6000	MMP1700PC1	36,9

Cable Ladder LH150

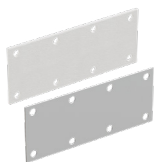
Cable ladder with system height 150mm, used for heavy duty applications.



Product	Ref No	Kg
CL-150-3000	MLH1130PC1	18,5
CL-300-3000	MLH1131PC1	19,2
CL-450-3000	MLH1132PC1	20,1
CL-600-3000	MLH1133PC1	21,0
CL-750-3000	MLH1134PC1	22,0
CL-900-3000	MLH1135PC1	22,9
CL-150-6000	MLH11306PC1	37,0
CL-300-6000	MLH11316PC1	38,4
CL-450-6000	MLH11326PC1	40,3
CL-600-6000	MLH11336PC1	42,1
CL-750-6000	MLH11346PC1	44,0
CL-900-6000	MLH11356PC1	45,8

CL Splice Connector

Fasteners not included. For splice plates in SS use M10x20 mm bolt set. For splice plates in GRP use M10x25 mm bolt set.



	LM100	LMP150	LH150			
Product	Ref No	Kg	Ref No	Kg	Ref No	Kg
CL splice plates PC1	MLM2326PC1	0,2	MLH2186PC1	2,5	MLH2186PC1	2,5
CL splice plates SS	MLM2328SS	0,2	MLH2327SS		MLH2327SS	

CL Horizontal Angle Bracket 90°

Fasteners not included. For splice plates in SS use M10x20 mm bolt set. For splice plates in GRP use M10x25 mm bolt set.



	LM100	LMP150	LH150			
Product	Ref No	Kg	Ref No	Kg	Ref No	Kg
CL hor angle bracket 90 PC1	MLM2253PC1		MLH2151PC1		MLH2151PC1	
CL hor angle bracket 90 SS	MLM2222SS		MLH2101SS		MLH2101SS	

CL Vertical Hinge

Fasteners not included. For splice plates in SS use M10x20 mm bolt set. For splice plates in GRP use M10x25 mm bolt set.



	LM100	LMP150	LH150			
Product	Ref No	Kg	Ref No	Kg	Ref No	Kg
CL vertical hinge PC1	MLM2254PC1		MLH2152PC1		MLH2152PC1	
CL vertical hinge adj SS	MLM2223SS		MLH2224SS		MLH2224SS	

CL Vertical Angle Bracket

Fasteners not included. For splice plates in SS use M10x20 mm bolt set. For splice plates in GRP use M10x25 mm bolt set.



	LM100	LMP150	LH150			
Product	Ref No	Kg	Ref No	Kg	Ref No	Kg
Splice angle vert. 22.5o SS	MLM2280SS		MLH2258SS		MLH2258SS	
Splice angle vert. 30o SS	MLM2281SS		MLH2259SS		MLH2259SS	
Splice angle vert. 45o SS	MLM2282SS		MLH2260SS		MLH2260SS	

CL/CT Fixing Clamp

Supplied without bolts.
Use M10 for CL/CT Flange Fixing Clamp.
For Fixing Clamp use M10 for cable ladder and M6 for cable trays.



Product	Ref No	Kg
CL/CT Flange Fixing clamp SS	MCT2125SS	
CL/CT Fixing clamp SS	MCT2123SS	
CL/CT Fixing clamp PC1	MCT2124PC1	

CL Cover

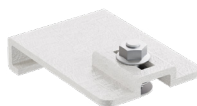
Material GRP, Length 3000mm



Product	Ref No	Kg
CL Cover-150	MLC1658PC1	2,9
CL Cover-200	MLC1158PC1	
CL Cover-300	MLC1659PC1	5,5
CL Cover-400	MLC1159PC1	
CL Cover-450	MLC1660PC1	8
CL Cover-600	MLC1661PC1	10,6
CL Cover-750	MLC1662PC1	13,2
CL Cover-900	MLC1663PC1	15,8

CL Cover Fixing Clamp

Fasteners included.



Product	Ref No	Kg
CL Cover Fixing clamp PC1	MCC2331PC1	
CL cover fixing clamp SS	MCC2330SS	

CL Cover Clamp HD



	LM100	LMP150	LH150			
Product	Ref No	Kg	Ref No	Kg	Ref No	Kg
CL cover clamp-150	MCL3240PC1	0,3	MCL3246PC1		MCL3246PC1	
CL cover clamp-200	MCL3241PC1	0,3	MCL3247PC1		MCL3247PC1	
CL cover clamp-300	MCL3242PC1	0,3	MCL3248PC1		MCL3248PC1	
CL cover clamp-400	MCL3243PC1	0,4	MCL3249PC1		MCL3249PC1	
CL cover clamp-450	MCL3256PC1		MCL3298PC1		MCL3298PC1	
CL cover clamp-600	MCL2373PC1	0,5	MCL2376PC1		MCL2376PC1	
CL cover clamp-750	MCL2374PC1	0,6	MCL2377PC1		MCL2377PC1	
CL cover clamp-900	MCL2375PC1	0,7	MCL2378PC1		MCL2378PC1	

CL Divider



	LM100	LMP150	LH150			
Product	Ref No	Kg	Ref No	Kg	Ref No	Kg
CL Divider	MLM2272PC1	1,7	MLH2170PC1	2,5	MLH2170PC1	2,5

CL Flat Elbow 45° R3

Prefabricated standard flat elbow, appx radius 400mm
Ladder Height 100 & 150

Material: FRP Polyester Class 1 (Other Resins are available)

Angle plates and fasteners SS316L as Standard
(GRP Angle Plates also available)



	LM100		LMP150		LH150	
Product	Ref No	Kg	Ref No	Kg	Ref No	Kg
CL Flat Elbow-150	MLF1439PC1	2,3	MLF1307PC1	3,3	MLF1174PC1	4,1
CL Flat Elbow-200	MLF1152PC1	2,4				
CL Flat Elbow-300	MLF1440PC1	2,6	MLF1308PC1	3,7	MLF1175PC1	4,7
CL Flat Elbow-400	MLF1153PC1	2,8				
CL Flat Elbow-450	MLF1441PC1	3,3	MLF1309PC1	4,5	MLF1176PC1	5,5
CL Flat Elbow-600	MLF1442PC1	3,7	MLF1310PC1	5,1	MLF1177PC1	6,2
CL Flat Elbow-750	MLF1443PC1	4,2	MLF1311PC1	5,6	MLF1178PC1	6,8
CL Flat Elbow-900	MLF1444PC1	4,6	MLF1312PC1	6,1	MLF1179PC1	7,4

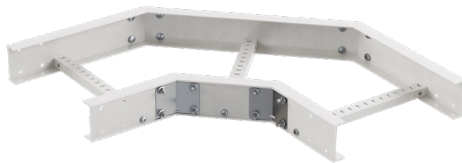
CL Flat Elbow 90° R3

Prefabricated standard flat elbow, Available in
Radius R300, R600 & R900

Ladder Height 100 & 150

Material: FRP Polyester Class 1 (Other Resins are available)

Angle plates and fasteners SS316L as Standard
(GRP Angle Plates also available)



	LM100		LMP150		LH150	
Product	Ref No	Kg	Ref No	Kg	Ref No	Kg
CL Flat Elbow-150	MLF1425PC1	3,8	MLF1293PC1	5,4	MLF1160PC1	6,8
CL Flat Elbow-200	MLF1150PC1	4				
CL Flat Elbow-300	MLF1426PC1	4,4	MLF1294PC1	6,2	MLF1161PC1	7,7
CL Flat Elbow-400	MLF1151PC1	4,8				
CL Flat Elbow-450	MLF1427PC1	5,6	MLF1295PC1	7,7	MLF1162PC1	9,4
CL Flat Elbow-600	MLF1428PC1	6,4	MLF1296PC1	8,7	MLF1163PC1	10,6
CL Flat Elbow-750	MLF1429PC1	7,1	MLF1297PC1	9,7	MLF1164PC1	11,7
CL Flat Elbow-900	MLF1430PC1	7,8	MLF1298PC1	10,7	MLF1165PC1	12,2

CL Equal Tee R3

Prefabricated standard horizontal tee, Standard
Radius R300, R600 & R900 - Other Radius available
Ladder Height 100 & 150

Material: FRP Polyester Class 1 (Other Resins are available)

Angle plates and fasteners SS316L as Standard
(GRP Angle Plates also available)



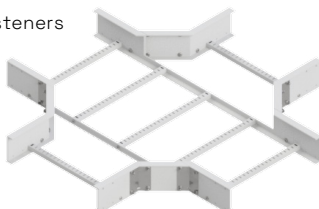
	LM100		LMP150		LH150	
Product	Ref No	Kg	Ref No	Kg	Ref No	Kg
CL Equal Tee-150	MLF1453PC1	5,6	MLF1321PC1	7,9	MLF1188PC1	10,0
CL Equal Tee-200	MLF1154PC1	5,8				
CL Equal Tee-300	MLF1454PC1	6,2	MLF1322PC1	8,6	MLF1189PC1	11,0
CL Equal Tee-400	MLF1155PC1	6,7				
CL Equal Tee-450	MLF1455PC1	7,2	MLF1323PC1	9,9	MLF1190PC1	12,3
CL Equal Tee-600	MLF1456PC1	8	MLF1324PC1	10,8	MLF1191PC1	13,4
CL Equal Tee-750	MLF1457PC1	9,3	MLF1325PC1	12,3	MLF1192PC1	15,0
CL Equal Tee-900	MLF1458PC1	10,2	MLF1326PC1	13,3	MLF1193PC1	16,2

CL Cross Piece R3

Prefabricated standard horizontal cross, Standard
Radius R300, R600 & R900 - Other Radius available
Ladder Height 100 & 150

Material: FRP Polyester Class 1 (Other Resins are available)

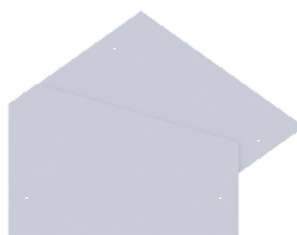
Angle plates and fasteners
SS316L as Standard
(GRP Angle Plates also available)



	LM100		LMP150		LH150	
Product	Ref No	Kg	Ref No	Kg	Ref No	Kg
CL Cross Piece-150	MLF1467PC1	7,6	MLF1335PC1	10,9	MLF1202PC1	13,3
CL Cross Piece-200	MLF1473PC1	7,9				
CL Cross Piece-300	MLF1468PC1	8,3	MLF1336PC1	11,7	MLF1203PC1	14,3
CL Cross Piece-400	MLF1340PC1	8,8			MLF1204PC1	15,4
CL Cross Piece-450	MLF1469PC1	9,4	MLF1337PC1	12,7		
CL Cross Piece-600	MLF1470PC1	10,2	MLF1338PC1	13,5	MLF1205PC1	16,3
CL Cross Piece-750	MLF1471PC1	11,5	MLF1339PC1	14,9	MLF1206PC1	17,6
CL Cross Piece-900	MLF1472PC1	12,3	MLF1340PC1	15,8	MLF1207PC1	18,7

CL Flat Elbow Cover 45° R3

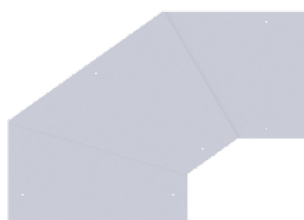
Prefabricated Flat Cover using one of our standard cover clamps.



Product	Ref No	Kg
CL FE Cover-150	MLC1671PC1	0,9
CL FE Cover-200	MLM2229PC1	
CL FE Cover-300	MLC1672PC1	1,3
CL FE Cover-400	MLM2230PC1	
CL FE Cover-450	MLC1673PC1	2,1
CL FE Cover-600	MLC1674PC1	3,0
CL FE Cover-750	MLC1675PC1	4,0
CL FE Cover-900	MLC1676PC1	5,1

CL Flat Elbow Cover 90° R3

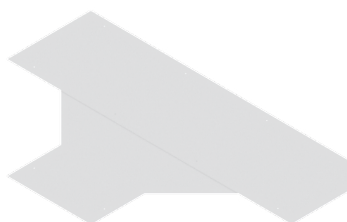
Prefabricated Flat Cover using one of our standard cover clamps. Available: R300, R600 & R900



Product	Ref No	Kg
CL FE Cover-150	MLC1664PC1	1,1
CL FE Cover-200	MLM2231PC1	
CL FE Cover-300	MLC1665PC1	2,3
CL FE Cover-400	MLM2232PC1	
CL FE Cover-450	MLC1666PC1	3,6
CL FE Cover-600	MLC1667PC1	5,2
CL FE Cover-750	MLC1668PC1	7,1
CL FE Cover-900	MLC1669PC1	9,0

CL Equal Tee Cover R3

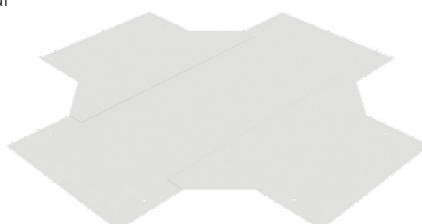
Prefabricated Flat Cover can be secured with SS316L Self Tapping screws or by using one of our standard cover clamps. Available: R300, R600 & R900



Product	Ref No	Kg
Equal Tee Cover 150	MLC1677PC1	1,8
Equal Tee Cover 200	MLM2233PC1	2,3
Equal Tee Cover 300	MLC1678PC1	3,5
Equal Tee Cover 400	MLM2234PC1	4,5
Equal Tee Cover 450	MLC1679PC1	5,2
Equal Tee Cover 600	MLC1680PC1	7,4
Equal Tee Cover 750	MLC1681PC1	9,8
Equal Tee Cover 900	MLC1682PC1	12,5

CL Equal Cross Cover R3

Prefabricated Flat Cover can be secured with SS316L Self Tapping screws or by using one of our standard cover clamps. Available: R300, R600 & R900



Product	Ref No	Kg
CL Equal Cross Cover 150	MLC1683PC1	2,6
CL Equal Cross Cover 200	MLM2235PC1	3,3
CL Equal Cross Cover 300	MLC1684PC1	4,7
CL Equal Cross Cover 400	MLM2236PC1	6,1
CL Equal Cross Cover 450	MLC1685PC1	6,8
CL Equal Cross Cover 600	MLC1686PC1	9,6
CL Equal Cross Cover 750	MLC1687PC1	12,4
CL Equal Cross Cover 900	MLC1688PC1	15,5

CL Flexi Riser
Internal 90° R4



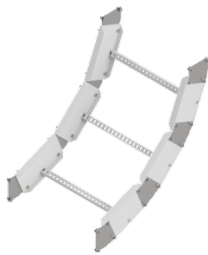
	LM100		LMP150		LH150	
Product	Ref No	Kg	Ref No	Kg	Ref No	Kg
CL Flexi Riser-150	MLF1488PC1	2,1	MLF1356PC1	3,2	MLF1223PC1	3,4
CL Flexi Riser-200	MLF1156PC1	2,1				
CL Flexi Riser-300	MLF1489PC1	2,2	MLF1357PC1	3,3	MLF1224PC1	3,5
CL Flexi Riser-400	MLF1157PC1	2,2				
CL Flexi Riser-450	MLF1490PC1	2,3	MLF1358PC1	3,4	MLF1225PC1	3,6
CL Flexi Riser-600	MLF1491PC1	2,3	MLF1359PC1	3,5	MLF1226PC1	3,7
CL Flexi Riser-750	MLF1492PC1	2,4	MLF1360PC1	3,5	MLF1227PC1	3,8
CL Flexi Riser-900	MLF1493PC1	2,5	MLF1361PC1	3,6	MLF1228PC1	3,8

CL Flexi Riser
Internal 90° R6



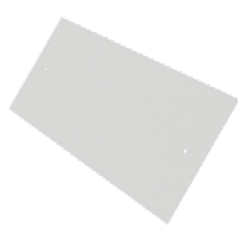
	LM100		LMP150		LH150	
Product	Ref No	Kg	Ref No	Kg	Ref No	Kg
CL Flexi Riser-150	MLF1495PC1	3,3	MLF1363PC1	5,4	MLF1230PC1	5,7
CL Flexi Riser-200	MLF1158PC1	3,6				
CL Flexi Riser-300	MLF1496PC1	3,5	MLF1364PC1	5,5	MLF1231PC1	5,9
CL Flexi Riser-400	MLF1169PC1	6,6				
CL Flexi Riser-450	MLF1497PC1	3,6	MLF1365PC1	5,8	MLF1232PC1	6,04
CL Flexi Riser-600	MLF1498PC1	3,8	MLF1366PC1	5,9	MLF1233PC1	6,2
CL Flexi Riser-750	MLF1499PC1	4,1	MLF1367PC1	6	MLF1234PC1	6,3
CL Flexi Riser-900	MLF1500PC1	4,2	MLF1368PC1	6,2	MLF1235PC1	6,5

CL Flexi Riser
Internal 90° R8



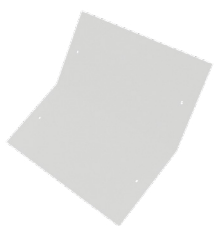
	LM100		LMP150		LH150	
Product	Ref No	Kg	Ref No	Kg	Ref No	Kg
CL Flexi Riser-150	MLF1502PC1	4,6	MLF1370PC1	7,8	MLF1237PC1	8,1
CL Flexi Riser-200	MLF1170PC1	7,5				
CL Flexi Riser-300	MLF1503PC1	4,9	MLF1371PC1	8	MLF1238PC1	8,3
CL Flexi Riser-400	MLF1171PC1	9,1				
CL Flexi Riser-450	MLF1504PC1	5,2	MLF1372PC1	8,3	MLF1239PC1	8,5
CL Flexi Riser-600	MLF1505PC1	5,6	MLF1373PC1	8,5	MLF1240PC1	8,8
CL Flexi Riser-750	MLF1506PC1	5,9	MLF1374PC1	8,8	MLF1241PC1	9
CL Flexi Riser-900	MLF1507PC1	6	MLF1375PC1	9	MLF1242PC1	9,3

CL Riser Cover
Internal 90° R4



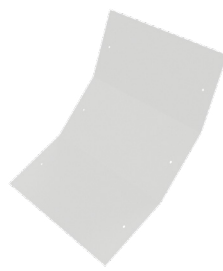
	LM100		LMP150		LH150	
Product	Ref No	Kg	Ref No	Kg	Ref No	Kg
CL FR Cover-150	MLR1793PC1		MLR1793PC1		MLR1793PC1	
CL FR Cover-200	MLR1792PC1					
CL FR Cover-300	MLR1791PC1		MLR1791PC1		MLR1791PC1	
CL FR Cover-400	MLR1790PC1					
CL FR Cover-450	MLR1789PC1		MLR1789PC1		MLR1789PC1	
CL FR Cover-600	MLR1788PC1		MLR1788PC1		MLR1788PC1	
CL FR Cover-750	MLR1787PC1		MLR1787PC1		MLR1787PC1	
CL FR Cover-900	MLR1786PC1		MLR1786PC1		MLR1786PC1	

CL Riser Cover
Internal 90° R6



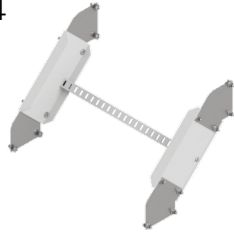
	LM100		LMP150		LH150	
Product	Ref No	Kg	Ref No	Kg	Ref No	Kg
CL FR Cover-150	MLR1801PC1		MLR1801PC1		MLR1801PC1	
CL FR Cover-200	MLR1800PC1					
CL FR Cover-300	MLR1799PC1		MLR1799PC1		MLR1799PC1	
CL FR Cover-400	MLR1798PC1					
CL FR Cover-450	MLR1797PC1		MLR1797PC1		MLR1797PC1	
CL FR Cover-600	MLR1796PC1		MLR1796PC1		MLR1796PC1	
CL FR Cover-750	MLR1795PC1		MLR1795PC1		MLR1795PC1	
CL FR Cover-900	MLR1794PC1		MLR1794PC1		MLR1794PC1	

CL Riser Cover
Internal 90° R8



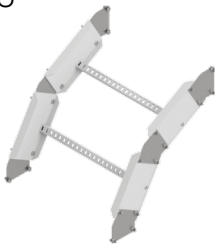
	LM100		LMP150		LH150	
Product	Ref No	Kg	Ref No	Kg	Ref No	Kg
CL FR Cover-150	MLR1809PC1		MLR1809PC1		MLR1809PC1	
CL FR Cover-200	MLR1808PC1					
CL FR Cover-300	MLR1807PC1		MLR1807PC1		MLR1807PC1	
CL FR Cover-400	MLR1806PC1					
CL FR Cover-450	MLR1805PC1		MLR1805PC1		MLR1805PC1	
CL FR Cover-600	MLR1804PC1		MLR1804PC1		MLR1804PC1	
CL FR Cover-750	MLR1803PC1		MLR1803PC1		MLR1803PC1	
CL FR Cover-900	MLR1802PC1		MLR1802PC1		MLR1802PC1	

CL Flexi Riser
External 90° R4



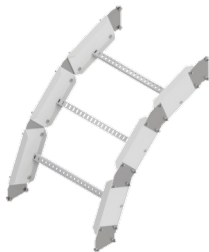
	LM100		LMP150		LH150	
Product	Ref No	Kg	Ref No	Kg	Ref No	Kg
CL Flexi Riser-150	MLF1509PC1	1,9	MLF1377PC1	2,9	MLF1244PC1	3,1
CL Flexi Riser-200	MLF1172PC1	10,1				
CL Flexi Riser-300	MLF1510PC1	2	MLF1378PC1	2,9	MLF1245PC1	3,2
CL Flexi Riser-400	MLF1173PC1	11,1				
CL Flexi Riser-450	MLF1511PC1	2,1	MLF1379PC1	3	MLF1246PC1	3,3
CL Flexi Riser-600	MLF1512PC1	2,2	MLF1380PC1	3,1	MLF1247PC1	3,4
CL Flexi Riser-750	MLF1513PC1	2,3	MLF1381PC1	3,2	MLF1248PC1	3,5
CL Flexi Riser-900	MLF1514PC1	2,4	MLF1382PC1	3,3	MLF1249PC1	3,6

CL Flexi Riser
External 90° R6



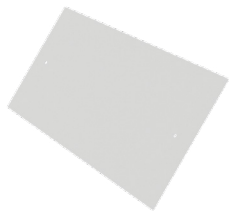
	LM100		LMP150		LH150	
Product	Ref No	Kg	Ref No	Kg	Ref No	Kg
CL Flexi Riser-150	MLF1516PC1	3,3	MLF1384PC1	5	MLF1251PC1	5,4
CL Flexi Riser-200	MLF1182PC1					
CL Flexi Riser-300	MLF1517PC1	3,5	MLF1385PC1	5,2	MLF1252PC1	5,6
CL Flexi Riser-400	MLF1183PC1					
CL Flexi Riser-450	MLF1518PC1	3,6	MLF1386PC1	5,2	MLF1253PC1	5,7
CL Flexi Riser-600	MLF1519PC1	3,8	MLF1387PC1	5,5	MLF1254PC1	6
CL Flexi Riser-750	MLF1520PC1	4,1	MLF1388PC1	5,7	MLF1255PC1	6,2
CL Flexi Riser-900	MLF1521PC1	4,2	MLF1389PC1	5,9	MLF1256PC1	6,4

CL Flexi Riser
External 90° R8



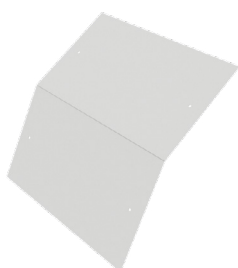
	LM100		LMP150		LH150	
Product	Ref No	Kg	Ref No	Kg	Ref No	Kg
CL Flexi Riser-150	MLF1523PC1	4,6	MLF1391PC1	7	MLF1258PC1	7,6
CL Flexi Riser-200	MLF1180PC1					
CL Flexi Riser-300	MLF1524PC1	4,9	MLF1392PC1	7,3	MLF1259PC1	7,9
CL Flexi Riser-400	MLF1181PC1					
CL Flexi Riser-450	MLF1525PC1	5,2	MLF1393PC1	7,5	MLF1260PC1	8,2
CL Flexi Riser-600	MLF1526PC1	5,6	MLF1394PC1	7,9	MLF1261PC1	8,6
CL Flexi Riser-750	MLF1527PC1	5,9	MLF1395PC1	8,1	MLF1262PC1	8,8
CL Flexi Riser-900	MLF1528PC1	6	MLF1396PC1	8,4	MLF1263PC1	9,15

CL Flexi Riser Cover
External 90° R4



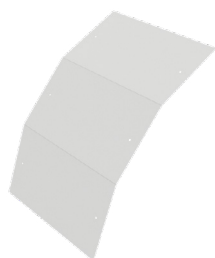
	LM100		LMP150		LH150	
Product	Ref No	Kg	Ref No	Kg	Ref No	Kg
CL FR Cover-150	MLR1817PC1	0,3	MLR1823PC1	0,4	MLR1823PC1	0,4
CL FR Cover-200	MLR1816PC1	0,4				
CL FR Cover-300	MLR1815PC1	0,7	MLR1822PC1	0,7	MLR1822PC1	0,7
CL FR Cover-400	MLR1814PC1	0,9				
CL FR Cover-450	MLR1813PC1	1	MLR1821PC1	1,1	MLR1821PC1	1,1
CL FR Cover-600	MLR1812PC1	1,3	MLR1820PC1	1,4	MLR1820PC1	1,4
CL FR Cover-750	MLR1811PC1	1,6	MLR1819PC1	1,8	MLR1819PC1	1,8
CL FR Cover-900	MLR1810PC1	2,2	MLR1818PC1	2,2	MLR1818PC1	2,2

CL Riser Cover
External 90° R6



	LM100		LMP150		LH150	
Product	Ref No	Kg	Ref No	Kg	Ref No	Kg
CL FR Cover-150	MLR1831PC1	0,6	MLR1837PC1	0,7	MLR1837PC1	0,7
CL FR Cover-200	MLR1830PC1	0,8				
CL FR Cover-300	MLR1829PC1	1,2	MLR1836PC1	1,3	MLR1836PC1	1,3
CL FR Cover-400	MLR1828PC1	1,6				
CL FR Cover-450	MLR1827PC1	1,8	MLR1835PC1	2	MLR1835PC1	2
CL FR Cover-600	MLR1826PC1	2,4	MLR1834PC1	2,6	MLR1834PC1	2,6
CL FR Cover-750	MLR1825PC1	3,1	MLR1833PC1	3,3	MLR1833PC1	3,3
CL FR Cover-900	MLR1824PC1	3,7	MLR1832PC1	3,9	MLR1832PC1	3,9

CL Riser Cover
External 90° R8



	LM100		LMP150		LH150	
Product	Ref No	Kg	Ref No	Kg	Ref No	Kg
CL FR Cover-150	MLR1845PC1	0,9	MLR1851PC1	0,9	MLR1851PC1	0,9
CL FR Cover-200	MLR1844PC1	1,2				
CL FR Cover-300	MLR1843PC1	1,8	MLR1850PC1	1,9	MLR1850PC1	1,9
CL FR Cover-400	MLR1842PC1	2,3				
CL FR Cover-450	MLR1841PC1	2,6	MLR1849PC1	2,8	MLR1849PC1	2,8
CL FR Cover-600	MLR1840PC1	3,5	MLR1848PC1	3,7	MLR1848PC1	3,7
CL FR Cover-750	MLR1839PC1	4,4	MLR1847PC1	4,6	MLR1847PC1	4,6
CL FR Cover-900	MLR1838PC1	5,3	MLR1846PC1	5,6	MLR1846PC1	5,6

CL Reducer Right

Prefabricated standard Reducer, Available Central/Straigh, Left or Right Hand
Height 100 & 150
Material: FRP Polyester Class 1 (Other Resins are available)
Angle plates and fasteners SS316L as Standard (GRP Angle Plates also available)



	LM100		LMP150		LH150	
Product	Ref No	Kg	Ref No	Kg	Ref No	Kg
CL Reducer-300-150	MLF1530PCc	3,2	MLF1398PC1	4,6	MLF1265PC1	5,7
CL Reducer-450-150	MLF1531PC1	3,8	MLF1399PC1	5,4	MLF1266PC1	6,9
CL Reducer-600-150	MLF1532PC1	4,7	MLF1400PC1	6,6	MLF1267PC1	8,3
CL Reducer-450-300	MLF1533PC1	3,4	MLF1401PC1	4,8	MLF1268PC1	6
CL Reducer-600-300	MLF1534PC1	4	MLF1402PC1	5,7	MLF1269PC1	7,1
CL Reducer-750-300	MLF1535PC1	5	MLF1403PC1	7	MLF1270PC1	8,7
CL Reducer-900-300	MLF1536PC1	5,7	MLF1404PC1	8	MLF1271PC1	9,9
CL Reducer-600-450	MLF1537PC1	3,7	MLF1405PC1	5,1	MLF1272PC1	6,3
CL Reducer-750-450	MLF1538PC1	4,3	MLF1406PC1	6	MLF1273PC1	7,4
CL Reducer-900-450	MLF1539PC1	5,4	MLF1407PC1	7,4	MLF1274PC1	9,1
CL Reducer-750-600	MLF1540PC1	4	MLF1408PC1	5,4	MLF1275PC1	6,5
CL Reducer-900-600	MLF1541PC1	4,6	MLF1409PC1	6,3	MLF1276PC1	7,7
CL Reducer-900-750	MLF1542PC1	4,3	MLF1410PC1	5,7	MLF1277PC1	6,8

CL Reducer Center



	LM100		LMP150		LH150	
Product	Ref No	Kg	Ref No	Kg	Ref No	Kg
CL Reducer-300-150	MLF1558PC1	3	MLF1735PC1	3,9	MLF1279PC1	5,7
CL Reducer-450-150	MLF1559PC1	3,7	MLF1736PC1	4,8	MLF1280PC1	6,7
CL Reducer-600-150	MLF1560PC1	4,1	MLF1737PC1	5,4	MLF1281PC1	7,4
CL Reducer-450-300	MLF1561PC1	3,3	MLF1738PC1	4,1	MLF1282PC1	5,9
CL Reducer-600-300	MLF1562PC1	4	MLF1739PC1	5,1	MLF1283PC1	7
CL Reducer-750-300	MLF1563PC1	4,4	MLF1740PC1	5,7	MLF1284PC1	7,7
CL Reducer-900-300	MLF1564PC1	4,8	MLF1741PC1	6,2	MLF1285PC1	8,4
CL Reducer-600-450	MLF1565PC1	3,4	MLF1742PC1	4,3	MLF1286PC1	6,1
CL Reducer-750-450	MLF1566PC1	4,3	MLF1743PC1	5,3	MLF1287PC1	7,3
CL Reducer-900-450	MLF1567PC1	4,7	MLF1744PC1	5,9	MLF1288PC1	8
CL Reducer-750-600	MLF1568PC1	3,6	MLF1745PC1	4,5	MLF1289PC1	6,2
CL Reducer-900-600	MLF1569PC1	4,6	MLF1746PC1	5,6	MLF1290PC1	7,5
CL Reducer-900-750	MLF1570PC1	3,8	MLF1747PC1	4,7	MLF1291PC1	6,4

CL Reducer Left



	LM100		LMP150		LH150	
Product	Ref No	Kg	Ref No	Kg	Ref No	Kg
CL Reducer-300-150	MLF1544PC1	3,2	MLF1412PC1	4,6	MLF1722PC1	5,7
CL Reducer-450-150	MLF1545PC1	3,8	MLF1413PC1	5,4	MLF1723PC1	6,9
CL Reducer-600-150	MLF1546PC1	4,7	MLF1414PC1	6,6	MLF1724PC1	8,3
CL Reducer-450-300	MLF1547PC1	3,4	MLF1415PC1	4,8	MLF1725PC1	6
CL Reducer-600-300	MLF1548PC1	4	MLF1416PC1	5,7	MLF1726PC1	7,1
CL Reducer-750-300	MLF1549PC1	5	MLF1417PC1	7	MLF1727PC1	8,7
CL Reducer-900-300	MLF1550PC1	5,7	MLF1418PC1	8	MLF1728PC1	9,9
CL Reducer-600-450	MLF1551PC1	3,7	MLF1419PC1	5,1	MLF1729PC1	6,3
CL Reducer-750-450	MLF1552PC1	4,3	MLF1420PC1	6	MLF1730PC1	7,4
CL Reducer-900-450	MLF1553PC1	5,4	MLF1421PC1	7,4	MLF1731PC1	9,1
CL Reducer-750-600	MLF1554PC1	4	MLF1422PC1	5,4	MLF1732PC1	6,5
CL Reducer-900-600	MLF1555PC1	4,6	MLF1423PC1	6,3	MLF1733PC1	7,7
CL Reducer-900-750	MLF1556PC1	4,3	MLF1424PC1	5,7	MLF1734PC1	6,8

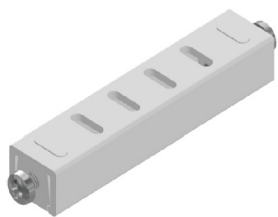
CL Z Reducer

Prefabricated standard Reducer, Available Central/ Straigh, Left or Right Hand
Height 100 & 150
Material: GRP Polyester Class 1 (Other Resins are available)
Angle plates and fasteners SS316L are included.
(GRP Angle Plates also available)



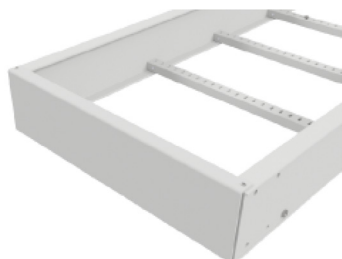
	LM100		LMP150		LH150	
Product	Ref No	Kg	Ref No	Kg	Ref No	Kg
CL Z Reducer-150	MLM2259PC1	0,8	MLH2157PC1	1	MLH2157PC1	1
CL Z Reducer-200	MLM2227PC1	0,9				
CL Z Reducer-300	MLM2260PC1	1	MLH2158PC1	1,5	MLH2158PC1	1,5
CL Z Reducer-400	MLM2228PC1	1,1				
CL Z Reducer-450	MLM2261PC1	1,1	MLH2159PC1	1,9	MLH2159PC1	1,9
CL Z Reducer-600	MLM2262PC1	1,3	MLH2160PC1	2,4	MLH2160PC1	2,4

CL Rung



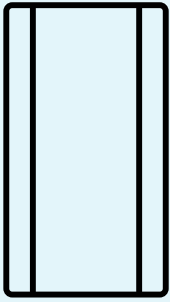
	LM100		LMP150		LH150	
Product	Ref No	Kg	Ref No	Kg	Ref No	Kg
CL Rung-150	MR1695PC1	0,1	MR1695PC1	0,1	MR1695PC1	0,1
CL Rung-200	MR1791PC1	0,1	MR1791PC1	0,1	MR1791PC1	0,1
CL Rung-300	MR1696PC1	0,2	MR1696PC1	0,2	MR1696PC1	0,2
CL Rung-400	MR1792PC1	0,2	MR1792PC1	0,2	MR1792PC1	0,2
CL Rung-450	MR1697PC1	0,3	MR1697PC1	0,3	MR1697PC1	0,3
CL Rung-600	MR1698PC1	0,4	MR1698PC1	0,4	MR1698PC1	0,4
CL Rung-750	MR1699PC1	0,5	MR1699PC1	0,5	MR1699PC1	0,5
CL Rung-900	MR1700PC1	0,6	MR1700PC1	0,6	MR1700PC1	0,6

CL Endplate



	LM100		LMP150		LH150	
Product	Ref No	Kg	Ref No	Kg	Ref No	Kg
CL Endplate-150	MLM2265PC1	0,1	MLH2163PC1	0,2	MLH2163PC1	0,2
CL Endplate-200	MLM2225PC1	0,1				
CL Endplate-300	MLM2266PC1	0,2	MLH2164PC1	0,3	MLH2164PC1	0,3
CL Endplate-400	MLM2226PC1	0,2				
CL Endplate-450	MLM2267PC1	0,3	MLH2165PC1	0,4	MLH2165PC1	0,4
CL Endplate-600	MLM2268PC1	0,4	MLH2166PC1	0,5	MLH2166PC1	0,5
CL Endplate-750	MLM2269PC1	0,5	MLH2167PC1	0,6	MLH2167PC1	0,6
CL Endplate-900	MLM2270PC1	0,5	MLH2168PC1	0,7	MLH2168PC1	0,7

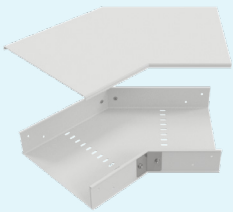




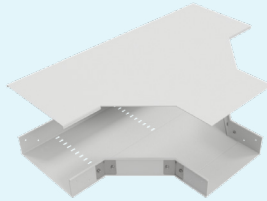
Cable Tray overview

Mita Flex offers a complete range of composite perforated cable trays, including fittings and accessories, available in two series, CT50 and CT80.

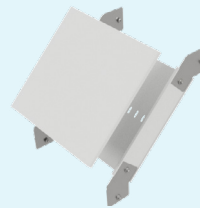
The FRP/GRP cable trays are light, yet strong and corrosion resistant. They are designed to deliver high performance, maximum load capacity with reduced weight and improved handling, allowing easy and quick installation. The cable trays are available in a variety of resin types.



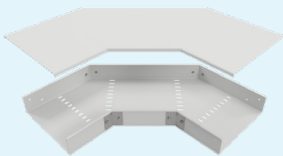
Flexi Riser



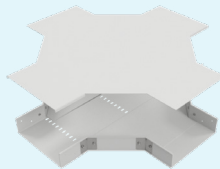
Tee R300



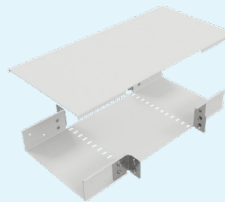
Combi Riser



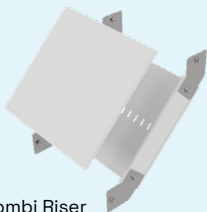
45° Flat Elbow



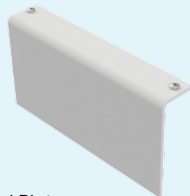
Cross R300



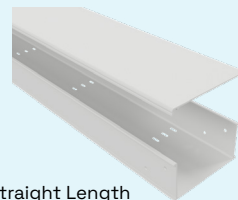
Tee



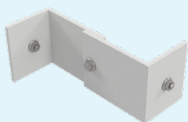
Combi Riser



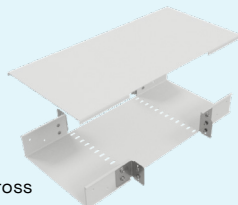
End Plate



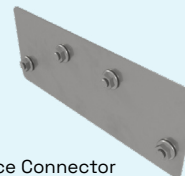
Straight Length



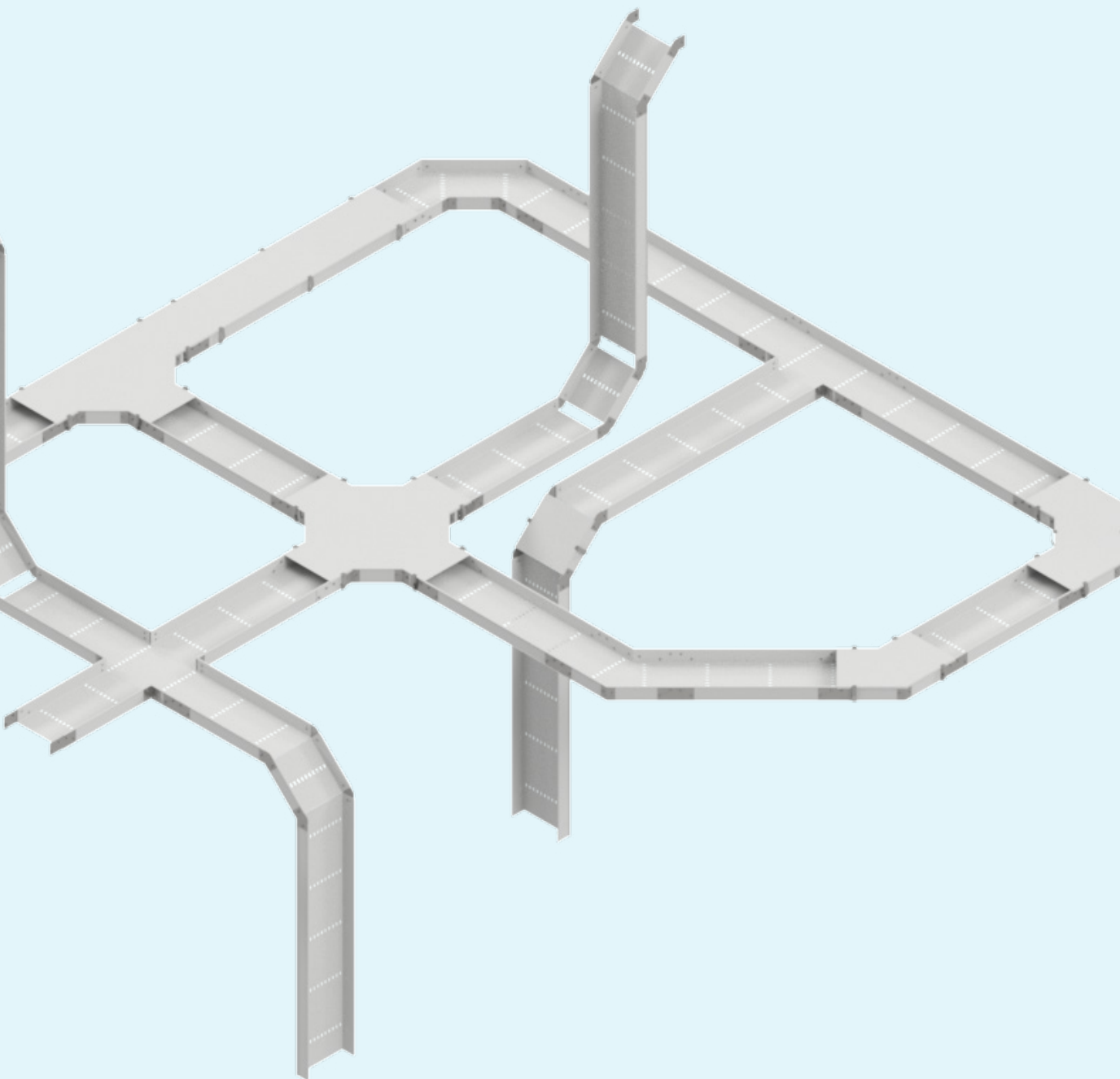
Z Reducer



Cross



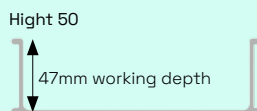
Splice Connector



A complete and flexible system

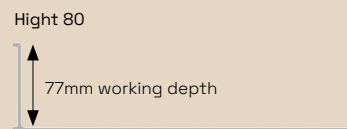
Cable Tray CT50

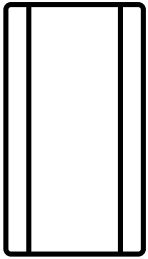
Cable tray with system height 50mm and widths 50 to 400 mm.



Cable Tray CT80

Cable tray with system height 80mm and widths 50 to 400 mm.





Cable Trays and fitting selection

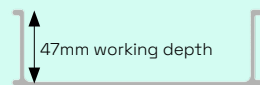
Return Flange type profile design for added strength.

- For Electrical & Instrumentation Applications.
- Tray heights 50mm & 80mm
- Length 3000mm

CT50

Cable tray with system height 50mm and widths 50 to 400 mm.

Hight 50

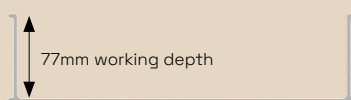


Product	Ref No	Kg
CT50-50-3000	MCT3105PC1	2,9
CT50-100-3000	MCT3106PC1	3,7
CT50-150-3000	MCT3107PC1	4,5
CT50-200-3000	MCT3108PC1	5,5
CT50-300-3000	MCT3109PC1	7,8
CT50-400-3000	MCT3250PC1	11,8

CT80

Cable tray with system height 80mm and widths 50 to 400 mm.

Hight 80



Product	Ref No	Kg
CT80-50-3000	MCT3156PC1	3,9
CT80-100-3000	MCT3157PC1	4,7
CT80-150-3000	MCT3158PC1	5,5
CT80-200-3000	MCT3159PC1	6,5
CT80-300-3000	MCT3160PC1	9,2
CT80-400-3000	MCT3313PC1	13,1

Cable Tray Type	Resin Selection	Rail Height (mm)	Working Depth	SWL 1,5m(kg/m)	Length (m)
CT50	PC1 – Polyester Class 1	50	47	70	3*
	AS – Polyester Antistatic				
	VE – Vinyl ester				
	AC – Acrylic				
CT80	PC1 – Polyester Class 1	80	77	100	3*
	AS – Polyester Antistatic				
	VE – Vinyl ester				
	AC – Acrylic				

SWL according to IEC61537, test type 3.

* Alternative lengths available on request

CT Splice Plates

Fasteners not included.
Use M6 x 16 for Splice plate GRP.
Use M6 x 12 SS for Splice plate SS.



	CT50		CT80	
Product	Ref No	Kg	Ref No	Kg
Splice plate PC1	MCT3102PC1		MCT3110PC1	
Splice plate SS	MCT3101SS		MCT3103SS	

CT Vertical Splice Angle 45°

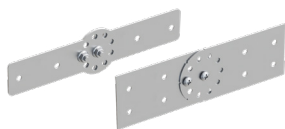
Fasteners not included.
Use M6 x 16 for Splice plate GRP.
Use M6 x 12 SS for Splice plate SS.



	CT50		CT80	
Product	Ref No	Kg	Ref No	Kg
Vertical Splice Angle 45° PC1	MCT3145PC1		MCT3196PC1	
Vertical Splice Angle 45° SS	MCT3104SS		MCT3179SS	

CT Vertical Hinge

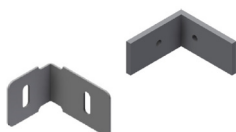
Fasteners not included.
Use M6 x 16 for Splice plate GRP.
Use M6 x 12 SS for Splice plate SS.



	CT50		CT80	
Product	Ref No	Kg	Ref No	Kg
CT Vertical Hinge PC1	MCT3143PC1		MCT3194PC1	
CT Vertical Hinge adjust. SS	MCT3800SS		MCT3801SS	

CT Horizontal Splice Angle Bracket 90°

Fasteners not included.
Use M6 x 16 for Splice plate GRP.
Use M6 x 12 SS for Splice plate SS.



	CT50		CT80	
Product	Ref No	Kg	Ref No	Kg
CT Horizontal Splice Angle 90° PC1	MCT3144PC1		MCT3195PC1	
CT Horizontal Splice Angle 90° SS	MCT3802SS		MCT3803SS	

CL/CT Fixing Clamp

Supplied without bolts.
Use M10 for CL/CT Flange Fixing Clamp.
For Fixing Clamp use M10 for cable ladder and M6 for cable trays.



Product	Ref No	Kg
CL/CT Flange Fixing clamp SS	MCT2125SS	
CL/CT Fixing clamp SS	MCT2123SS	
CL/CT Fixing clamp PC1	MCT2124PC1	

CT Cover

Snap-Fit Covers provide an easy to install and positive fixing with additional clips available for most applications or Heavy duty cover clamps for harsh conditions
Length 3000mm



Product	Ref No	Kg
CT Cover-50-3000 PC1	MCT3206PC1	1,5
CT Cover-100-3000 PC1	MCT3207PC1	2,2
CT Cover-150-3000 PC1	MCT3208PC1	3
CT Cover-200-3000 PC1	MCT3209PC1	3,8
CT Cover-300-3000 PC1	MCT3210PC1	5,3
CT Cover-400-3000 PC1	MCT3211PC1	6,9

CT Grip Clip

The SS316L Grip Clip provides an easy to install solution to secure the tray cover
Tray heights 50mm & 80mm



	CT50		CT80	
Product	Ref No	Kg	Ref No	Kg
CT grip clip SS	MCT3236SS	0,01	MCT3237SS	0,02

CT HD Cover Clamp

Heavy Duty cover clamp for securing snap fit covers in exposed wind areas.
Tray heights 50mm & 80mm
Full GRP Construction



	CT50		CT80	
Product	Ref No	Kg	Ref No	Kg
CT HD cover clamp-50	MCT2379PC1		MCT2385PC1	
CT HD cover clamp-100	MCT2380PC1		MCT2386PC1	
CT HD cover clamp-150	MCT2381PC1		MCT2387PC1	
CT HD cover clamp-200	MCT2382PC1		MCT2388PC1	
CT HD cover clamp-300	MCT2383PC1		MCT2389PC1	
CT HD cover clamp-400	MCT2384PC1		MCT2390PC1	

CT Divider

Divider for separation of different cable types.
Tray heights 50mm & 80mm



	CT50		CT80	
Product	Ref No	Kg	Ref No	Kg
CT Divider	MCT3755PC1	1,2	MCT3205PC1	1,6

CT Flat Elbow 45° R3

Prefabricated standard flat elbow,
Tray heights 50mm & 80mm
Angle plates and fasteners
SS316L as Standard (GRP Angle
Plates also available)



	CT50		CT80	
Product	Ref No	Kg	Ref No	Kg
CT Flat Elbow-50	MCT3117PC1	0,5	MCT3168PC1	0,7
CT Flat Elbow-100	MCT3118PC1	0,7	MCT3169PC1	0,83
CT Flat Elbow-150	MCT3119PC1	0,8	MCT3170PC1	0,98
CT Flat Elbow-200	MCT3120PC1	1	MCT3171PC1	1,18
CT Flat Elbow-300	MCT3121PC1	1,5	MCT3172PC1	1,7
CT Flat Elbow-400	MCT3252PC1	2,23	MCT3259PC1	2,53

CT Flat Elbow 90° R3

Prefabricated standard
flat elbow, (Other Radius
available)
Tray heights 50mm & 80mm
Angle plates and fasteners
SS316L as Standard (GRP
Angle Plates also available)



	CT50		CT80	
Product	Ref No	Kg	Ref No	Kg
CT Flat Elbow-50	MCT3111PC1	0,9	MCT3162PC1	1,2
CT Flat Elbow-100	MCT3112PC1	1,1	MCT3163PC1	1,4
CT Flat Elbow-150	MCT3113PC1	1,4	MCT3164PC1	1,7
CT Flat Elbow-200	MCT3114PC1	1,7	MCT3165PC1	2,0
CT Flat Elbow-300	MCT3115PC1	2,6	MCT3166PC1	2,9
CT Flat Elbow-400	MCT3251PC1	4,1	MCT3258PC1	4,4

CT Equal Tee

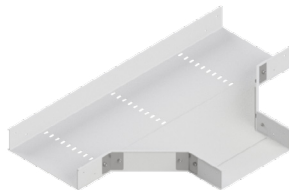
Prefabricated standard Equal
Tee, available also as Radius
300mm
Tray heights 50mm & 80mm
Angle plates and fasteners
SS316L as Standard (GRP
Angle Plates also available)



	CT50		CT80	
Product	Ref No	Kg	Ref No	Kg
CT Equal Tee-50	MCT3174PC1	0,4	MCT3123PC1	0,7
CT Equal Tee-100	MCT3175PC1	0,5	MCT3124PC1	0,9
CT Equal Tee-150	MCT3176PC1	0,7	MCT3125PC1	1,1
CT Equal Tee-200	MCT3177PC1	1,0	MCT3126PC1	1,3
CT Equal Tee-300	MCT3178PC1	1,6	MCT3127PC1	2,0
CT Equal Tee-400	MCT3260PC1	2,8	MCT3257PC1	3,3

CT Equal Tee R3

Prefabricated standard Equal Tee,
available also as Radius 300mm
Tray heights 50mm & 80mm
Angle plates and fasteners SS316L
as Standard (GRP Angle Plates also
available)



	CT50		CT80	
Product	Ref No	Kg	Ref No	Kg
CT Equal Tee-50	MCT3174R3PC1	1,4	MCT3123R3PC1	1,8
CT Equal Tee-100	MCT3175R3PC1	1,8	MCT3124R3PC1	2,3
CT Equal Tee-150	MCT3176R3PC1	2,3	MCT3125R3PC1	2,7
CT Equal Tee-200	MCT3177R3PC1	2,8	MCT3126R3PC1	3,3
CT Equal Tee-300	MCT3178R3PC1	4,0	MCT3127R3PC1	4,6
CT Equal Tee-400	MCT3260R3PC1	6,1	MCT3257R3PC1	6,9

CT Cross Piece

Prefabricated standard Cross
Piece, available also as Radius
300mm
Tray heights 50mm & 80mm
Angle plates and fasteners
SS316L as Standard (GRP
Angle Plates also available)



	CT50		CT80	
Product	Ref No	Kg	Ref No	Kg
CT Cross Piece-50	MCT3129PC1	0,4	MCT3180PC1	0,6
CT Cross Piece-100	MCT3130PC1	0,6	MCT3181PC1	0,7
CT Cross Piece-150	MCT3131PC1	0,7	MCT3182PC1	0,9
CT Cross Piece-200	MCT3132PC1	0,9	MCT3183PC1	1,1
CT Cross Piece-300	MCT3133PC1	1,5	MCT3184PC1	1,7
CT Cross Piece-400	MCT3253PC1	2,6	MCT3261PC1	2,9

CT Cross Piece R3



	CT50		CT80	
Product	Ref No	Kg	Ref No	Kg
CT Cross Piece-50	MCT3129R3PC1	2,1	MCT3180R3PC1	2,7
CT Cross Piece-100	MCT3130R3PC1	2,7	MCT3181R3PC1	3,3
CT Cross Piece-150	MCT3131R3PC1	3,3	MCT3182R3PC1	3,9
CT Cross Piece-200	MCT3132R3PC1	4,1	MCT3183R3PC1	4,7
CT Cross Piece-300	MCT3133R3PC1	5,6	MCT3184R3PC1	6,3
CT Cross Piece-400	MCT3253R3PC1	8,1	MCT3261R3PC1	8,8

CT Flat Elbow Cover 45° R3

Prefabricated Snap-Fit Covers



Product	Ref No	Kg
CT Flat Elbow Cover-50	MCT3218PC1	0,2
CT Flat Elbow Cover-100	MCT3219PC1	0,3
CT Flat Elbow Cover-150	MCT3220PC1	1,3
CT Flat Elbow Cover-200	MCT3221PC1	0,6
CT Flat Elbow Cover-300	MCT3222PC1	0,9
CT Flat Elbow Cover-400	MCT3223PC1	1,3

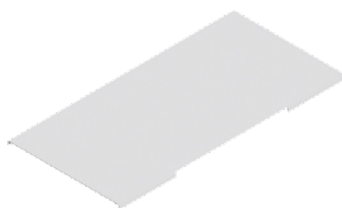
CT Flat Elbow Cover 90° R3



Product	Ref No	Kg
CT Flat Elbow Cover-50	MCT3212PC1	0,3
CT Flat Elbow Cover-100	MCT3213PC1	0,5
CT Flat Elbow Cover-150	MCT3214PC1	0,8
CT Flat Elbow Cover-200	MCT3215PC1	1
CT Flat Elbow Cover-300	MCT3216PC1	1,6
CT Flat Elbow Cover-400	MCT3217PC1	2,3

CT Equal Tee Cover

Prefabricated Snap-Fit Covers



Product	Ref No	Kg
CT Equal Tee Cover-50	MCT3224PC1	0,2
CT Equal Tee Cover-100	MCT3225PC1	0,3
CT Equal Tee Cover-150	MCT3226PC1	0,5
CT Equal Tee Cover-200	MCT3227PC1	0,7
CT Equal Tee Cover-300	MCT3228PC1	1,1
CT Equal Tee Cover-400	MCT3229PC1	1,7

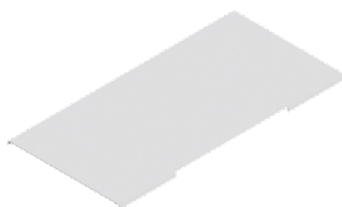
CT Equal Tee Cover R3

Prefabricated Snap-Fit Covers



Product	Ref No	Kg
CT Equal Tee Cover-50 R3	MCT3224R3PC1	0,2,6
CT Equal Tee Cover-100 R3	MCT3225R3PC1	0,9
CT Equal Tee Cover-150 R3	MCT3226R3PC1	1,2
CT Equal Tee Cover-200 R3	MCT3227R3PC1	1,5
CT Equal Tee Cover-300 R3	MCT3228R3PC1	2,3
CT Equal Tee Cover-400 R3	MCT3229R3PC1	3,2

CT Cross Piece Cover



Product	Ref No	Kg
CT Cross Piece Cover-50 PC1	MCT3327PC1	0,2
CT Cross Piece Cover-100 PC1	MCT3328PC1	0,3
CT Cross Piece Cover-150 PC1	MCT3329PC1	0,5
CT Cross Piece Cover-200 PC1	MCT3330PC1	0,7
CT Cross Piece Cover-300 PC1	MCT3331PC1	1,1
CT Cross Piece Cover-400 PC1	MCT3332PC1	1,7

CT Cross Piece Cover R3

Prefabricated Snap-Fit Covers



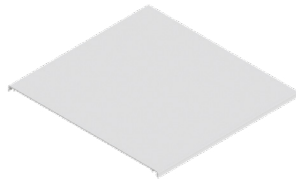
Product	Ref No	Kg
CT Cross Piece Cover-50 R3	MCT3327R3PC1	0,8
CT Cross Piece Cover-100 R3	MCT3328R3PC1	1,2
CT Cross Piece Cover-150 R3	MCT3329R3PC1	1,6
CT Cross Piece Cover-200 R3	MCT3330R3PC1	2,0
CT Cross Piece Cover-300 R3	MCT3331R3PC1	3,0
CT Cross Piece Cover-400 R3	MCT3332R3PC1	4,0

CT Combi Riser



		CT50		CT80	
Product	Ref No	Kg	Ref No	Kg	
CT Combi Riser-50	MCT3135PC1	0,6	MCT3186PC1	0,9	
CT Combi Riser-100	MCT3136PC1	0,6	MCT3187PC1	0,9	
CT Combi Riser-150	MCT3137PC1	0,7	MCT3188PC1	1,0	
CT Combi Riser-200	MCT3138PC1	0,8	MCT3189PC1	1,1	
CT Combi Riser-300	MCT3139PC1	1,1	MCT3190PC1	1,4	
CT Combi Riser-400	MCT3254PC1	1,5	MCT3262PC1	1,7	

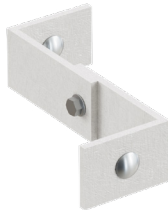
CT Combi Riser Cover



Product	Ref No	Kg
CT Combi Riser Cover-50	MCT3230PC1	
CT Combi Riser Cover-100	MCT3231PC1	
CT Combi Riser Cover-150	MCT3232PC1	
CT Combi Riser Cover-200	MCT3233PC1	
CT Combi Riser Cover-300	MCT3234PC1	
CT Combi Riser Cover-400	MCT3235PC1	

CT Reducer

Prefabricated reducer part, for jointing two trays of different width
 Tray heights 50mm & 80mm
 Fasteners SS316L are included.



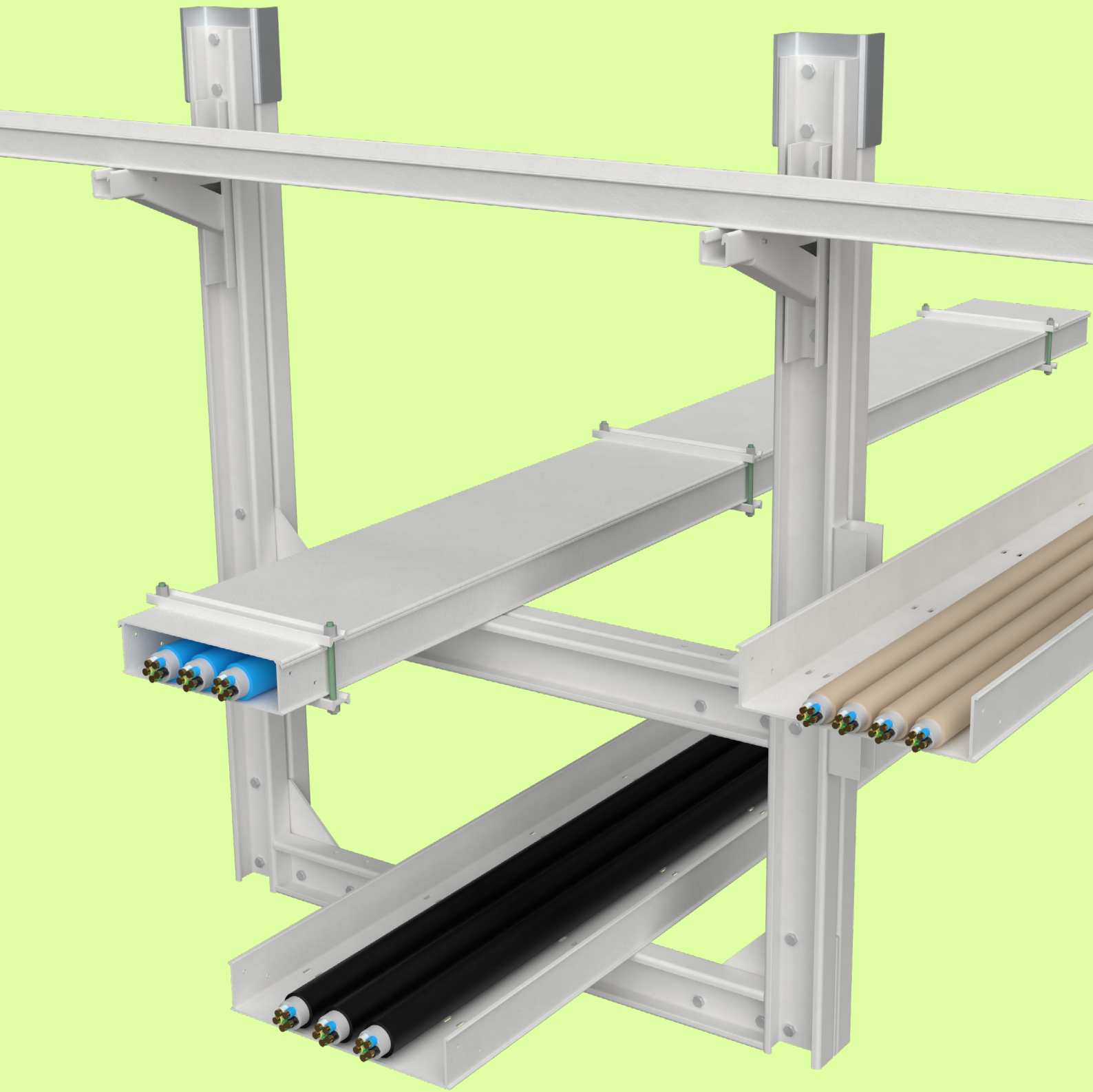
		CT50		CT80	
Product	Ref No	Kg	Ref No	Kg	
CT Reducer-50	MCT3350PC1	0,1	MCT3365PC1	0,2	
CT Reducer-100	MCT3351PC1	0,2	MCT3366PC1	0,2	
CT Reducer-150	MCT3352PC1	0,2	MCT3367PC1	0,2	
CT Reducer-200	MCT3353PC1	0,2	MCT3368PC1	0,3	
CT Reducer-300	MCT3354PC1	0,2	MCT3369PC1	0,4	

CT End Cover

Fastners included.



		CT50		CT80	
Product	Ref No	Kg	Ref No	Kg	
CT End Cover-50	MCT3148PC1	0,03	MCT3199PC1	1,33	
CT End Cover-100	MCT3149PC1	0,06	MCT3200PC1	1,33	
CT End Cover-150	MCT3150PC1	0,08	MCT3201PC1	1,33	
CT End Cover-200	MCT3151PC1	0,1	MCT3202PC1	1,33	
CT End Cover-300	MCT3152PC1	0,12	MCT3203PC1	1,33	
CT End Cover-400	MCT3255PC1	0,14	MCT3297PC1	0,16	



Accessories

Bolted Starter Bracket



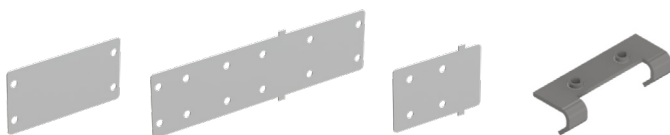
Product	Ref No	Kg
Bolted Starter Bracket HDG	MS4155S	
Bolted Starter Bracket SS	MS4157SS	

Welded Starter Bracket



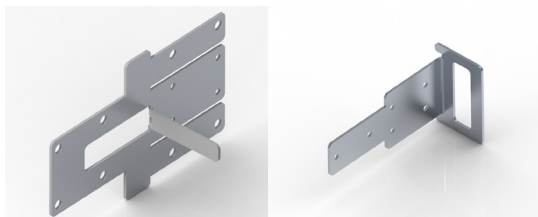
Product	Ref No	Kg
Welded Starter Bracket - mild steel	MS4156S	
Welded Starter Bracket - SS	MS4158SS	

Channel Support Drill Template

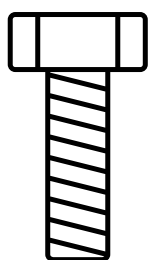


Product	Ref No	Kg
Channel Sup Drill Template -1 SS	MD2247SS	
Channel Sup Drill Template -2 SS	MD2248SS	
Channel Support Drill Template -3 SS	MD2249SS	
Channel Sleeve Drill Template SC100-50 SS	MD2246SS	

Cable Ladder / Cable tray Drill Template



Product	Ref No	Kg
CL 100/150 Drill Template SS	MD2251SS	
CT 50/80 Drill Template SS	MD2252SS	



Bolt & Bolt sets



Product	Ref No	Kg
1. Bolt set M6 x 12 SS	M4820SS	0,01
1. Bolt set Square neck M6 x 16 SS	M4824SS	0.011
2. Bolt M8 x 25 pan SS	M4813SS	0.021
3. Bolt set M10 x 20 A4 SS	M4823SS	
3. Bolt set M10 x 25 A4 SS	M4804SS	0.043
3. Bolt set M10 x 30 A4 SS	M4808SS	0.046
4. Bolt set Square neck M10 x 35 A4 SS	M4802SS	0.049
5. Bolt M10 x 25 SS	M4811SS	0.03
6. Hex Bolt M10 x 30 SS	M4809SS	0.03
7. Flange Nut M10 SS	M4810SS	0.015
8. Long Thread Hex Nut M10 PC1	M4816PC1	0.005
9. Bolt Stud M10 x 50 PC1	M4115PC1	0.01
10. Threaded rod M10 3m PC1	M4817PC1	0.55

MultiFlex support system bolt recommendation:

- When bolting Mita flex support system standard bolt size is 10 mm.
- For connections back to back use M10x25 boltset
- For use with gusset plates use M10x30 boltset

Cable ladder system:

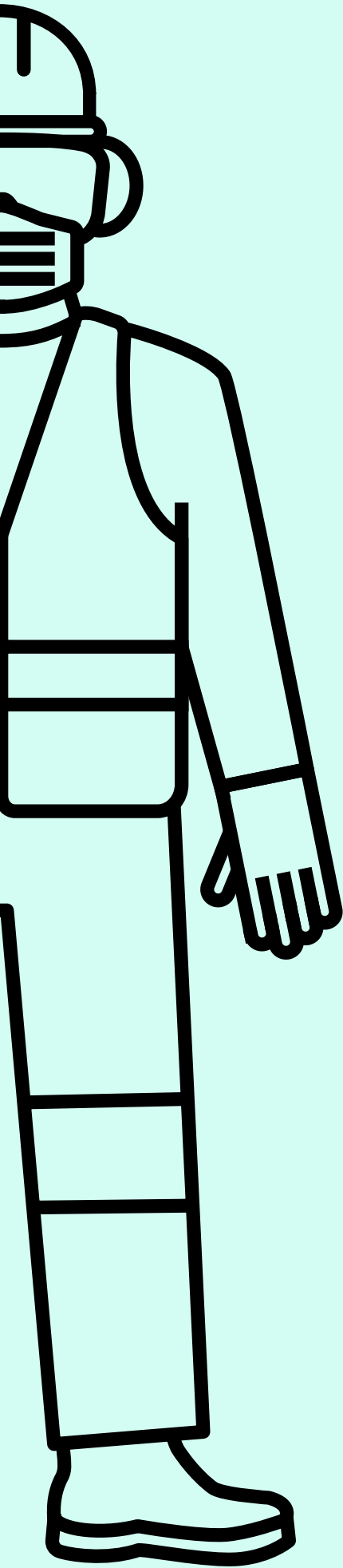
→ All bolts M10

When using stainless steel accessories (splice plates, hinges etc) standard bolt set is M10x20 mm, when using GRP accessories standard bolt set is M10x25mm

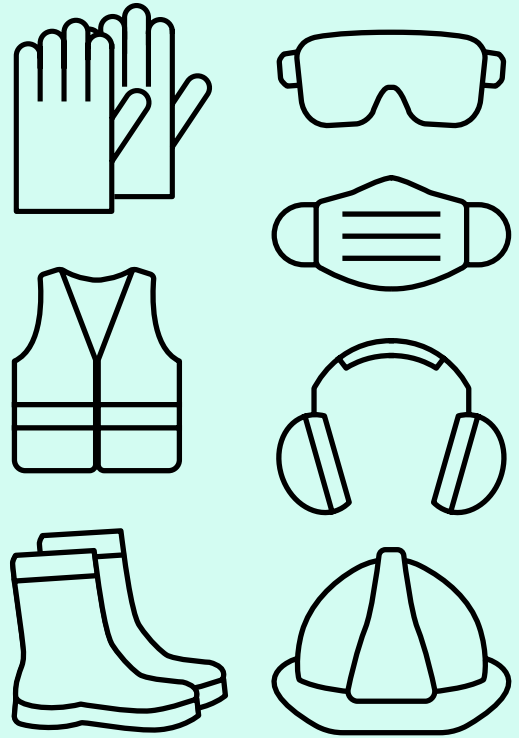
Cable tray system:

→ All bolts M6

When using stainless steel accessories (splice plates, hinges etc) use M6 x 12mm bolt set, for GRP accessories use M6 x 16mm bolt set



safety first



Tool selection

On-site cutting is easily done with the use of portable circular power saws and drilling equipment. For best results a diamond or carbide edged saw blade and carbide tip drill bits are the best solution.

Cutting and drilling

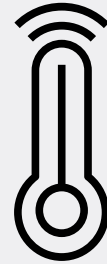
When cutting, grinding or sanding FRP products it is important to wear suitable protective equipment. Safety glasses, dust mask rated at N94 or above is recommended and gloves are necessary.

We also recommend wearing long-sleeved shirt or overalls when working with FRP. In some cases non-toxic dust is created if you are not in a well ventilated environment and this can cause some small irritations so make sure you wear the right gear at all times.

Mechanical Properties	ASTM	Units	Value	Units	Value
Tensile Stress, LW	D-638	psi	30,000	MPa	206.8
Tensile Stress, CW	D-638	psi	7,000	MPa	48.2
Tensile Modulus, LW	D-638	106 psi	2.5	GPa	17.2
Tensile Modulus, CW	D-638	106 psi	0.8	GPa	5.5
Compressive Stress, LW	D-695	psi	30,000	MPa	206.8
Compressive Stress, CW	D-695	psi	15,000	MPa	103.4
Compressive Modulus, LW	D-695	106 psi	2.5	GPa	17.2
Compressive Modulus, CW	D-695	106 psi	1.0	GPa	6.9
Flexural Stress, LW	D-790	psi	30,000	MPa	206.8
Flexural Stress, CW	D-790	psi	10,000	MPa	68.9
Flexural Modulus, LW	D-790	106 psi	1.8	GPa	12.4
Flexural Modulus, CW	D-790	106 psi	0.8	GPa	5.5
Modulus of Elasticity	Full Section	106 psi	2.8	GPa	19.3
Shear Modulus	----	106 psi	0.45	GPa	3.1
Short Beam Shear	D-2344	psi	4,500	MPa	31.0
Punch Shear	D-732	psi	10,000	MPa	68.9
Notched Izod Impact, LW	D-256	ft - lbs/in	25	J/mm	1.33
Notched Izod Impact, CW	D-256	ft - lbs/in	4	J/mm	0.21
Bearing Strength	D-953	psi	30,000	MPa	206.8
Physical Properties	ASTM	Units	Value	Units	Value
Bar Hardness	D-2583	----	45	----	45
24 Hour Water Absorption	D-570	% Max	0.45	% Max	0.45
Density	D-792	lbs/in ³	0.062 - 0.070	g/cm ³	1.72 - 1.94
Coefficient of Thermal Expansion, LW	D-696	106in/in/°F	7	10-6cm/ cm/°C	12
Electrical Properties	ASTM	Units	Value	Units	Value
Arc Resistance, LW	D-495	seconds	120	seconds	120
Dielectric Strength, LW	D-149	kv/in	35	kv/mm	1.37
Dielectric Strength, PF	D-149	volts/mil	200	volts/mil	200
Dielectric Constant, PF	D-150	@60hz	5	@60hz	5
Flammability Properties	ASTM	Units	Value	Units	Value
Tunnel Test	E-84		Flame Spread		25 max
Flammability	D-635		----		Non-Burning
NBS Smoke Chamber	E-662		Smoke Density		600 - 700



Effect on strength with temperature



The strength properties of reinforced plastics are reduced when the material is continually exposed to high temperatures. Loading shall be reduced based on the below table. Percentages shown are approximates.

When high temperatures are present please consult the manufacturer for application advice. Freezing temperatures do not effect the load rating of cable ladders and the cable management system as the FRP material does not be-come fragile. Special consideration is required when service temperatures are over 200° Fahrenheit/ 94° Celsius. Please contact us for expert consultation for special requirements.

Temperature	Polyester Resin % of Strength	Vinyl Ester % of Strength
75°F (24°C)	100%	100%
100°F (38°C)	90%	100%
125°F (52°C)	78%	100%
150°F (66°C)	68%	90%
175°F (79°C)	60%	90%
200°F (93°C)	52%	75%

The test values in this chart are obtained from laboratory testing

Thermal Contraction and Expansion

The table to the below compares the thermal contraction and expansion based on various temperature differentials for fiberglass, steel and aluminium cable trays. The values shown represent the length of cable tray that will produce a 16 mm (5-B*) movement between expansion connectors for the indicated temperature differential. Fiberglass has the least movement and requires least expansion joints. This simplifies the design and installation and minimizes expansion dynamic forces on the structure.

Temperature Differential	FRP Ft.(m)	Steel Ft. (m)	Aluminium Ft. (m)
25°F (14°C)	417 (126)	320 (97)	162 (49)
50°F (28°C)	208 (63)	160 (48)	81 (25)
(42°C)	138 (42)	106 (48)	54 (16)
100°F (56°C)	104 (32)	80 (24)	40 (12)
125°F (69°C)	83 (25)	63 (19)	32 (10)
150°F (83°C)	69 (21)	53 (16)	26 (8)
175°F (83°C)	59 (17)	45 (13)	23 (6)

Material & Product Standards and Certifications



Fire performance

BS 476 PART 7: CLASS 1

This is a vertical flame spread test and its one of the most requested certificates.

BS 476 P6

Specifies a method of test, the result is expressed as a fire propagation index.

ASTM E84 (from UL 0568)

Tests the rate of flame spread and smoke emissions of materials.

ASTM D635

Standard test method for measuring the rate of burning and duration of burning in plastic products. / Class HB

ISO 5659-2

Specifies a method of measuring smoke production from the exposed surface of specimens of materials or composites.

ISO 4589-2

Determination of burning behavior by oxygen index

ANSI/UL94

Plastics flammability standard for horizontal and vertical class.

IEC 61537:

Non-flame propagating system component class - Contribution to fire test IEC60695-2-11 (GWT) / Spread of fire 1kW test IEC60695-11-2

ISO 6721-11

Methods for determining a value of the glass transition temperature from the dynamic mechanical properties

EN14582-2016

This standard specifies a combustion method for the determination of halogen and sulfur contents in waste materials by combustion.

IEC 60754-series

Halogen contents determination only on materials for cables.

IEC 63355:2022

“New” Standard to determine the Halogen content specially for “Cable Management Systems.”

Weathering / Chemical corrosion

ASTM G154-16

Operating Fluorescent Ultraviolet (UV) Lamp Apparatus for Exposure of Nonmetallic Materials. (Color DeltaE measurement)

ISO 4892-2

Plastics- Methods of exposure to laboratory light sources - Part2- xenon-arc lamps (preferred test for “Cable Management Systems.”)

ASTM D 4329 (from UL 0568)

Ultraviolet light exposure or ASTM G 155 Arc xenon light exposure (evaluating mechanical acc. to ASTM D 790)

ISO 4582

Methods to determine changes in colour and other appearance properties, and variations in mechanical or other properties

ASTM B-117

Tests a materials ability to resist the corrosive effect of salt water.

ASTM D570

Determine the rate of absorption of water by immersing the specimen in water for a specific period of time.

ASTM C581

Determining Chemical Resistance of Thermosetting Resins Used in Glass-Fiber-Reinforced Structures

Isolation / Electrical properties

Electrically non-conductive system component -resistivity values of 100 MΩ or greater.

ASTM D257-14

This test measures the volume and surface resistivity of a material.

ASTM D149 (from UL 0568)

Dielectric Strength

IEC60079-0

General requirements for construction, testing and marking of Ex Equipment and Ex Com-ponents (for Antistatic resin)

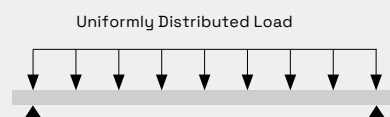
Mechanical performance

UL 0568

Nonmetallic Cable Tray Systems

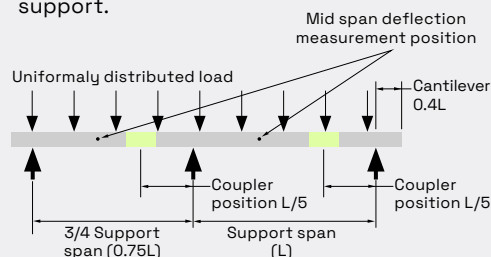
Nema FG-1

Standard that defines the construction and testing standards for nonmetallic cable tray systems



IEC 61537

International Standard specifies requirements and tests for cable tray systems and cable ladder systems intended for the Cable support.



IEC 61914 (Short Circuit test)

Cable cleats for electrical installations_ 9.5 Test for resistance to electromechanical force.

FRP Cable ladders, trays and accessories have been designed to withstand 25 years or more service life. Nevertheless, this cannot be achieved by product alone, Actual service of 25 years can only be achieved if cable ladders, trays and accessories are:

→ NOT subjected to any abnormal mechanical loads or mechanical impacts that would have long term effect on the performance of the product.

→ NOT subjected to abnormal corrosive atmosphere or subjected to direct contact with corrosive substance.

→ NOT subjected to any major alteration to the structure of the product or cut away areas or drill holes outside of the recommended installation guidelines.

Chemical Exposure Guide

CHEMICAL	Polyester Class 1 resin		Vinyl Ester Resin	
ENVIRONMENT	%Concentration	Max Op, Temp. F/C	% Concentration	Max Op, Temp. F/C
Acetic Acid	50	125/52	50	180/82
Aluminum Hydroxide	100	160/71	100	180/82
Ammonium Chloride	All	170/77	All	210/99
Ammonium Hydroxide	28	N/R	28	100/38
Ammonium Bicarbonate	15	125/52	15	160/70
Ammonium Sulfate	ALL	170/77	ALL	210/99
Benzene	N/R	N/R	N/R	N/R
Benzoic Acid	SAT	150/66	SAT	210/99
Borax	SAT	170/77	SAT	210/99
Calcium Carbonate	ALL	170/77	ALL	180/82
Calcium Nitrate	ALL	180/82	ALL	210/99
Carbon Tetrachloride	N/R	N/R	N/R	150/65
Chlorine, Dry Gas	-	140/60	-	210/99
Chlorine Water	SAT	80/27	SAT	200/93
Chromic Acid	5	70/21	5	150/65
Citric Acid	ALL	170/77	ALL	210/99
Copper Chloride	ALL	170/77	ALL	210/99
Copper Cyanide	ALL	170/77	ALL	210/99
Copper Nitrate	ALL	170/77	ALL	210/99
Ethanol	50	75/24	50	100/38
Ethylene Glycol	100	90/32	100	200/93
Ferric Chloride	ALL	170/77	ALL	210/99

Ferrous Chloride	ALL	170/77	ALL	210/99
Formaldehyde	50	75/24	50	150/65
Gasoline	100	80/27	100	180/82
Glucose	100	170/77	100	210/99
Glycerine	100	150/66	100	210/99
Hydrobromic Acid	50	120/49	50	150/65
Hydrochloric Acid	37	75/24	37	150/65
Hydrogen Peroxide	5	100/38	5	150/65
Lactic Acid	ALL	170/77	ALL	210/99
Lithium Chloride	SAT	150/66	SAT	210/99
Magnesium Chloride	ALL	170/77	ALL	210/99
Magnesium Nitrate	ALL	140/60	ALL	210/99
Magnesium Sulfate	ALL	170/77	ALL	210/99
Mercuric Chloride	100	150/66	100	210/99
Mercurous Chloride	ALL	140/60	ALL	210/99
Nickel Chloride	ALL	170/77	ALL	210/99
Nickel Sulfate	ALL	170/77	ALL	210/99
Nitrate Acid	20	70/21	20	120/49
Oxalic Acid	ALL	75/24	ALL	210/99
Perchloric Acid	N/R	N/R	N/R	100/38
Phosphoric Acid	100	120/49	100	210/99
Potassium Chloride	ALL	170/77	ALL	210/99
Potassium Dichromate	ALL	170/77	ALL	210/99
Potassium Nitrate	ALL	170/77	ALL	210/99
Potassium Sulfate	ALL	170/77	ALL	210/99
Propylene Glycol	ALL	170/77	ALL	210/99
Sodium Acetate	ALL	160/71	ALL	210/99
Sodium Bisulfate	ALL	170/77	ALL	210/99
Sodium Bromide	ALL	170/77	ALL	210/99
Sodium Cyanide	ALL	170/77	ALL	210/99
Sodium Hydroxide	N/R	N/R	N/R	180/82
Sodium Nitrate	ALL	170/77	ALL	210/99
Sodium Sulfate	ALL	170/77	ALL	210/99
Stannic Chloride	ALL	160/71	ALL	210/99
Sulfuric Acid	25	75/24	25	100/38
Tartaric Acid	ALL	170/77	ALL	210/99
Vinegar	100	170/77	100	210/99
Water, Distilled	100	170/77	100	180/82
Zinc Nitrate	ALL	170/77	ALL	210/99
Zinc Sulfate	ALL	170/77	ALL	210/99

Responsible business



Wibe Group is a multinational company with operations in different parts of the world. We want to run a responsible business, by understanding and managing all effects in the value chain. We see it not only as a responsibility but also an opportunity to influence and drive sustainable development for our business and communities.

Our ambition is to take the lead in our industry. With a clear vision and long term commitment, we will get there.

In 2024, we received a Silver Sustainability Rating from EcoVadis, placing us in the top 15% of all companies in the world, and top 3% of our industry segment. Join us on our journey to create sustainable solutions for generations to come!

Read more about our sustainability work on wibe-group.com



SILVER | Top 15%

ecovadis

Sustainability Rating

FEB 2024



A sheet of white paper with horizontal ruling lines. The lines are evenly spaced and extend across the width of the page. A light gray decorative shape is present in the background, consisting of a large triangle on the left side and a curved shape on the right side.

