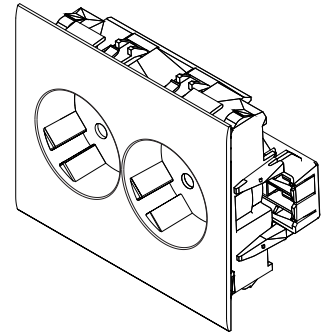
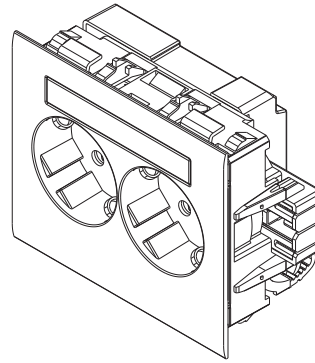


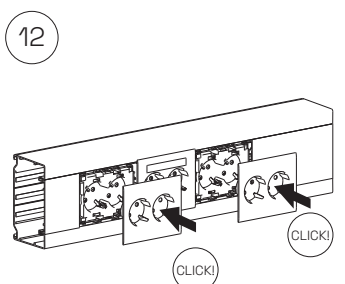
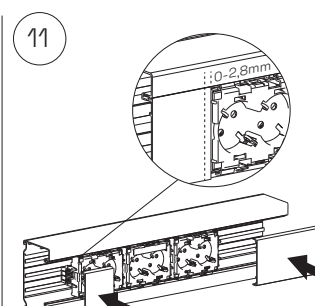
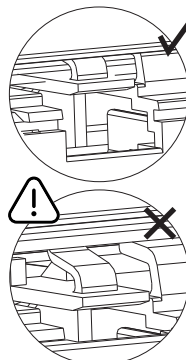
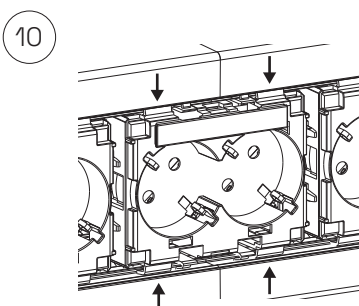
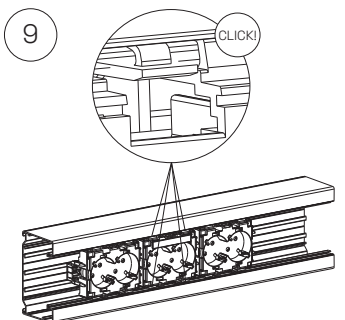
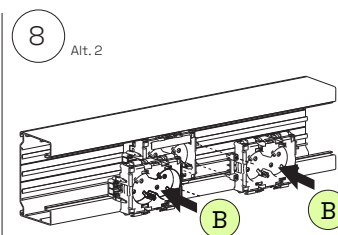
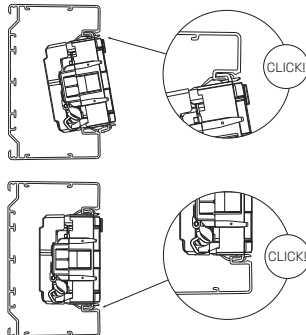
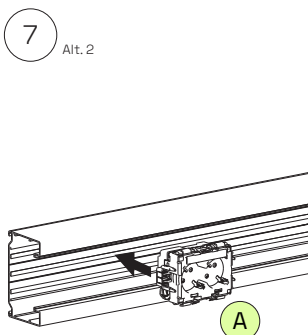
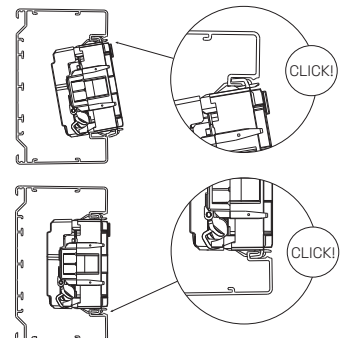
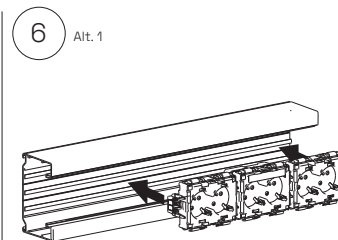
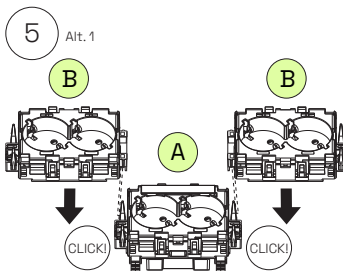
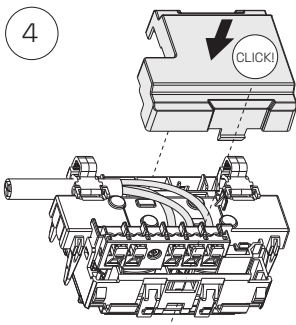
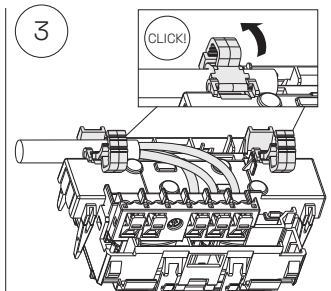
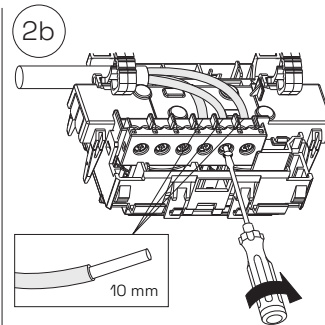
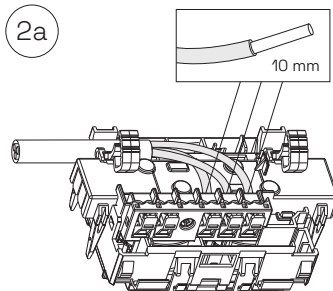
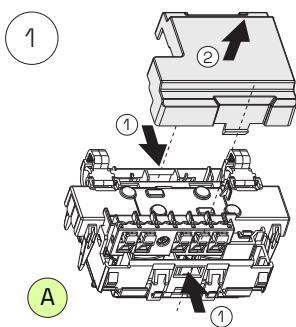
# Installation

Quick/screw connect socket outlet



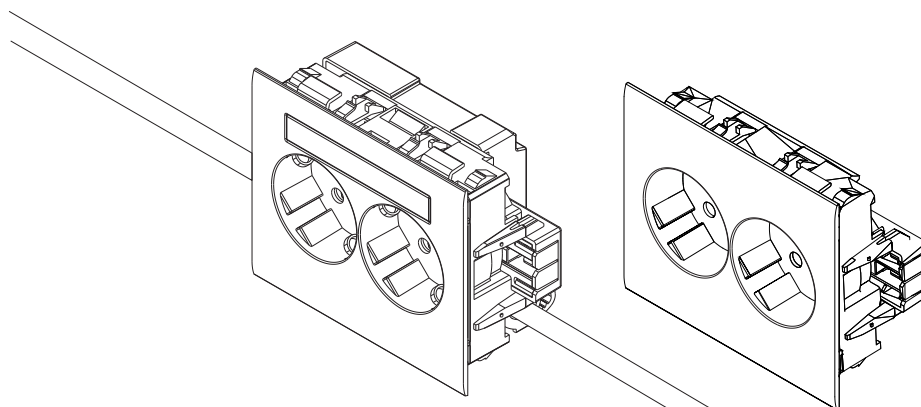
A Socket outlet  
Base unit

B Socket outlet  
Extension unit



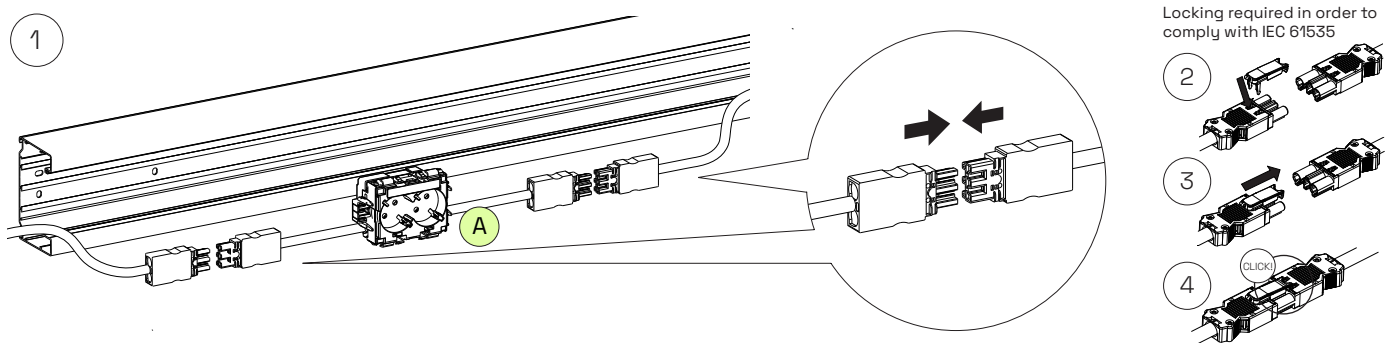
# Installation

Socket outlets with Wago  
or Wieland connectors

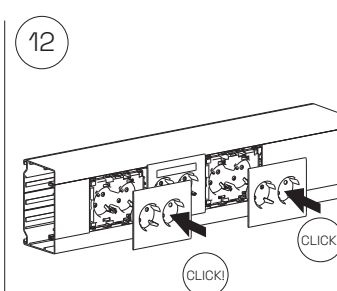
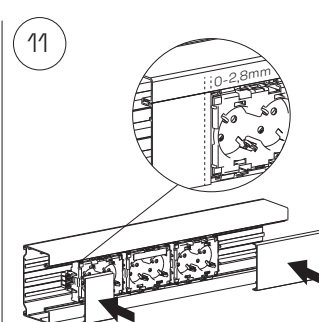
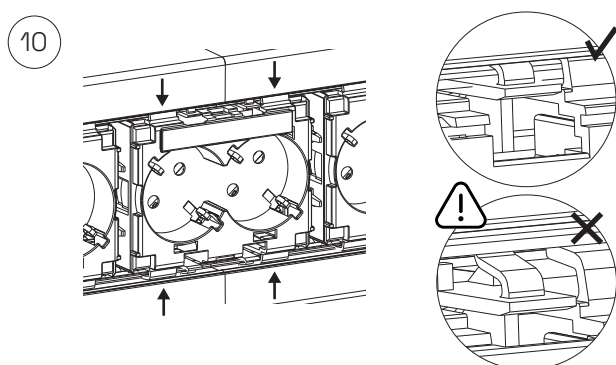
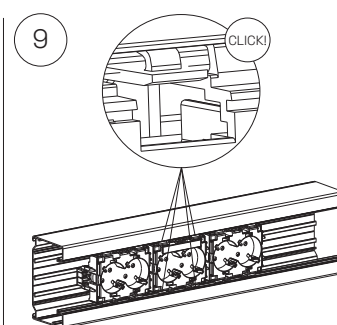
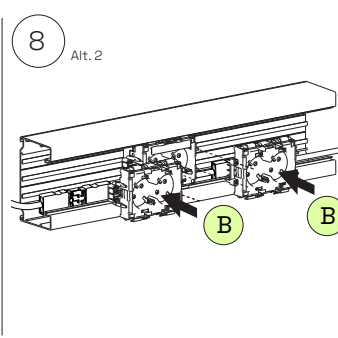
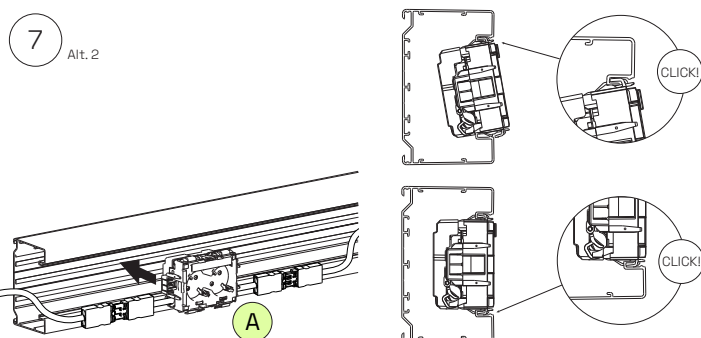
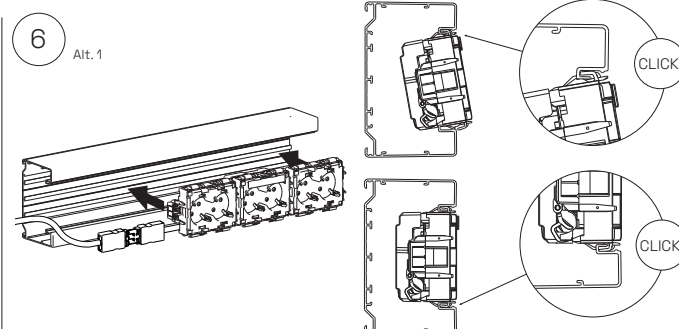
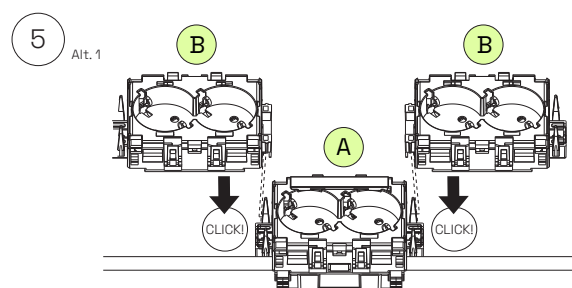


**A** Socket outlet  
Base unit

**B** Socket outlet  
Extension unit

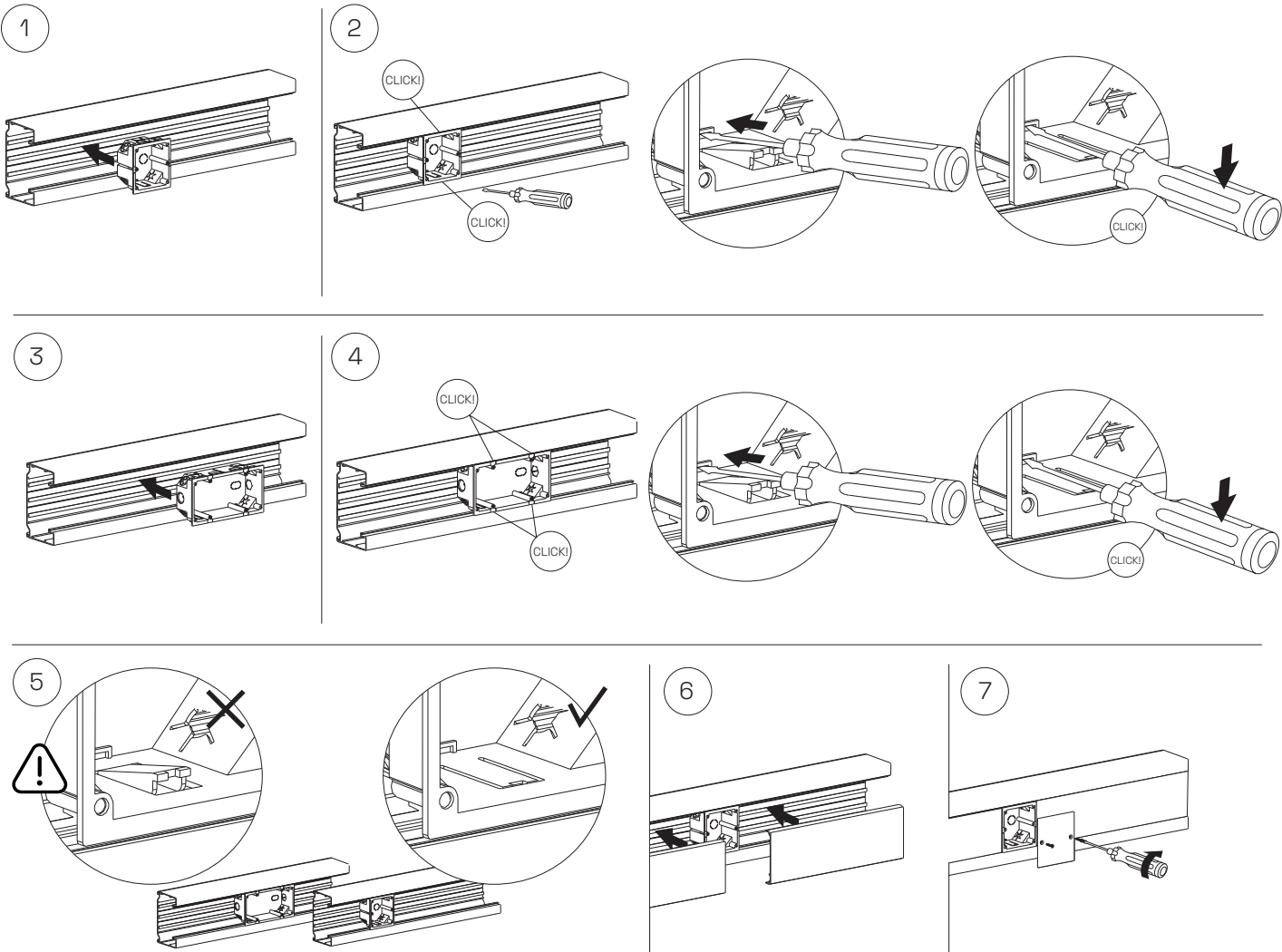
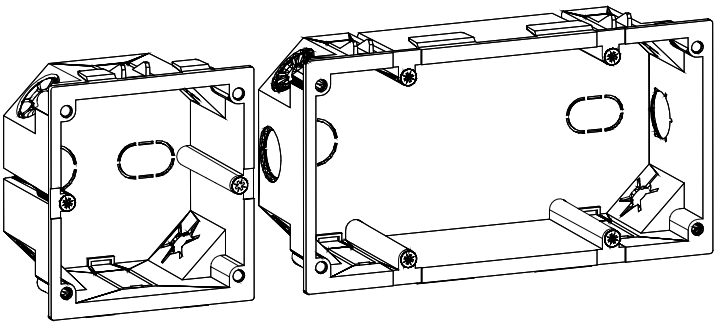


Locking required in order to  
comply with IEC 61535



# Installation

Installation box



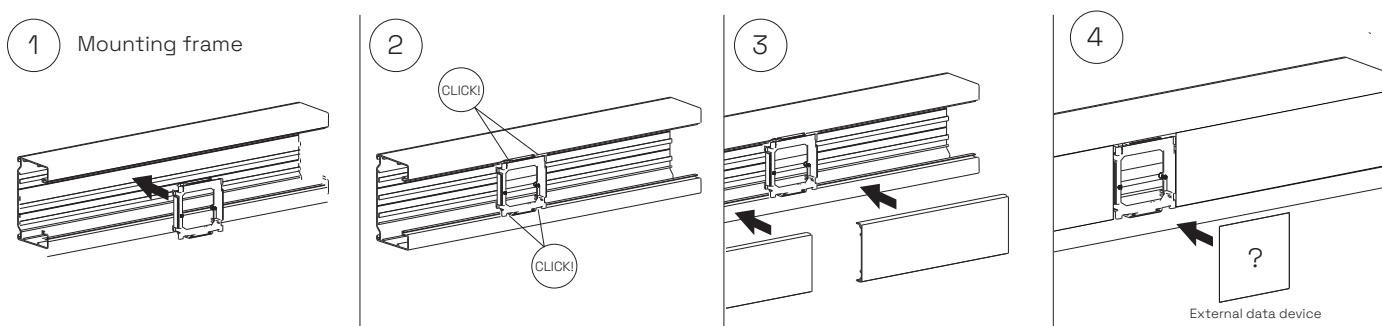
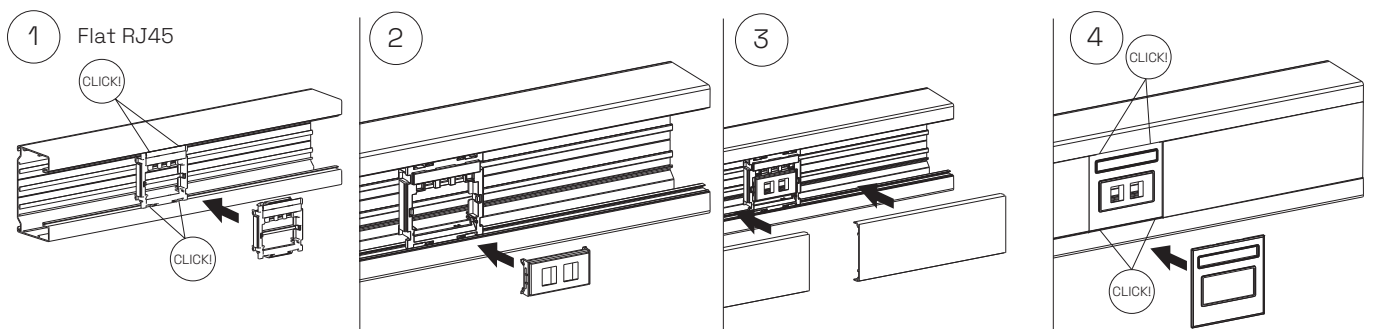
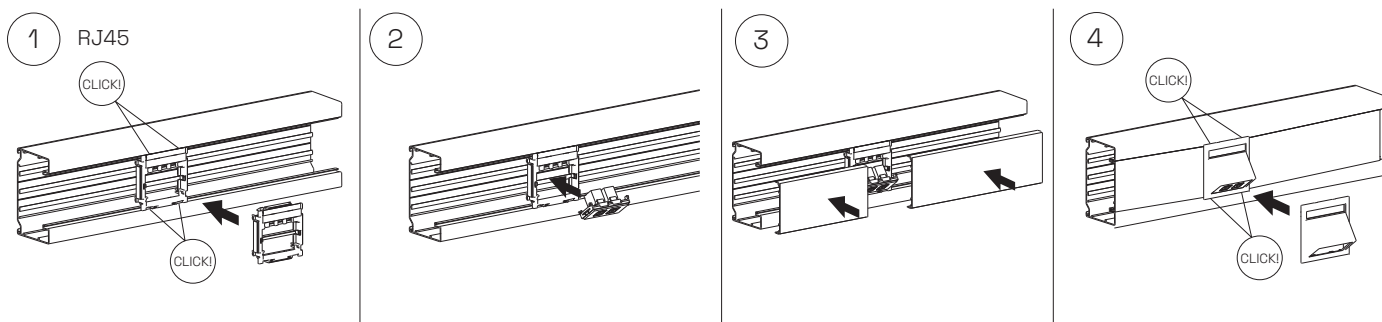
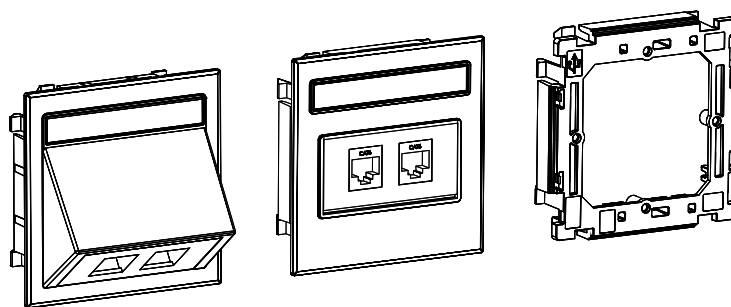
Ensure the front cover overlaps the trunking front for proper alignment and coverage

# Installation

Data outlet RJ45

Data outlet flat RJ45

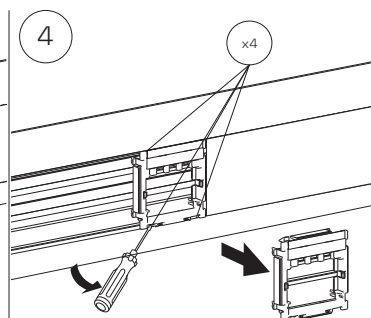
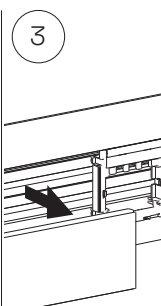
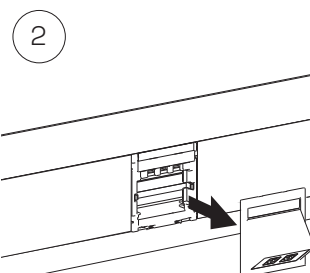
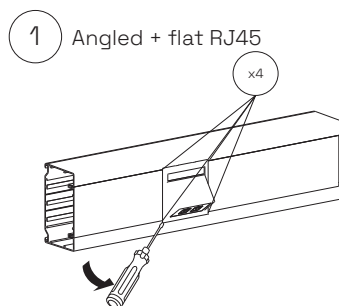
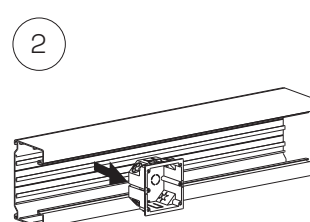
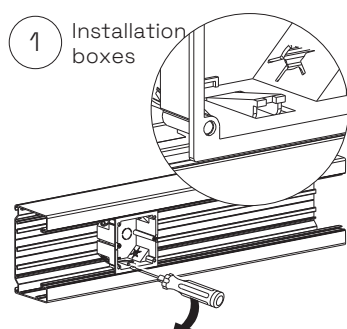
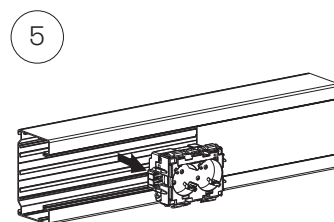
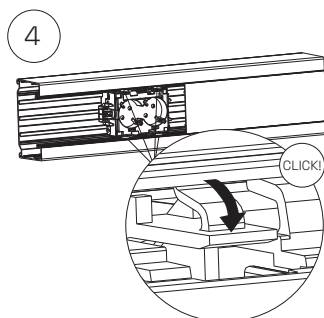
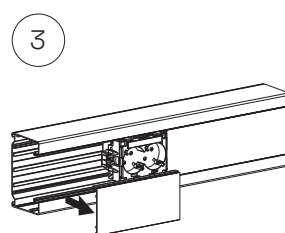
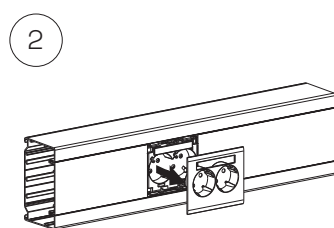
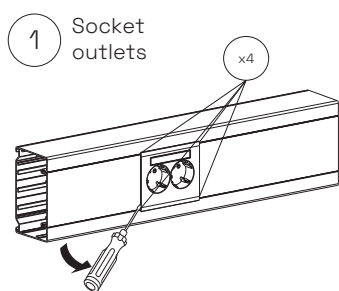
Mounting frame for 60mm  
data devices



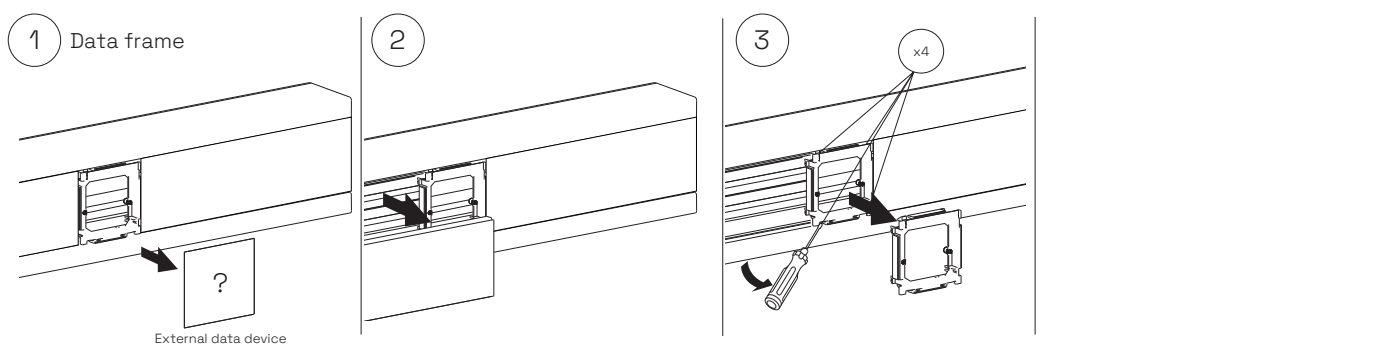
Ensure the front cover overlaps the trunking front for proper alignment and coverage



# Dismounting (p. 1/2)



## Dismounting (p. 2/2)



# Wiring diagram

## 3-phase

Reduce the number of feeding cables in larger installations by using a "3-phase bus" with an integrated 5 x 2.5 mm<sup>2</sup> dual push-in terminal.

## 1-phase

For small installations, use a 1-phase cable and push in or screw connection.

